

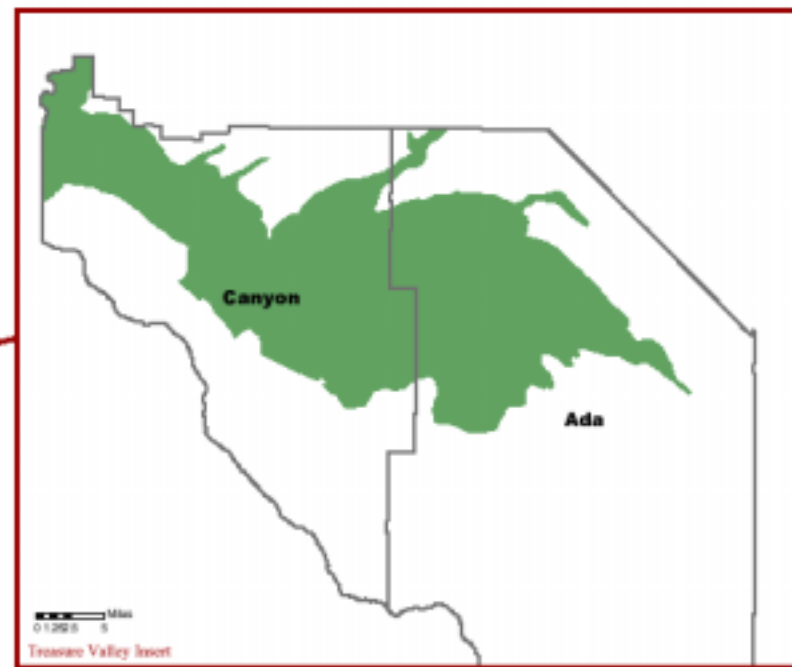
Jobs and Housing Treasure Valley, Idaho

Congress for New Urbanism

June 8, 2001

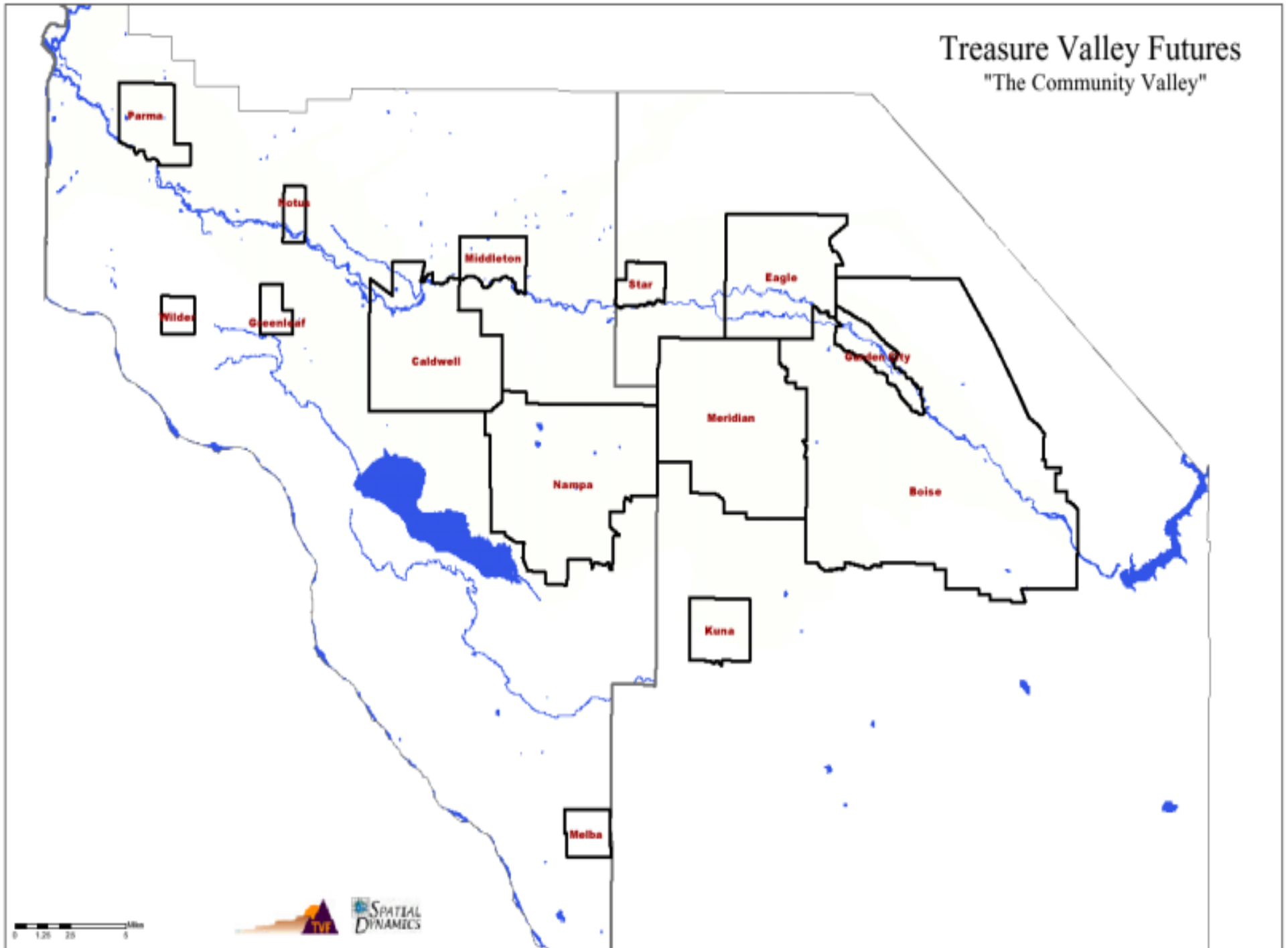
Treasure Valley Futures

"Idaho and the Treasure Valley"



Treasure Valley Futures

"The Community Valley"

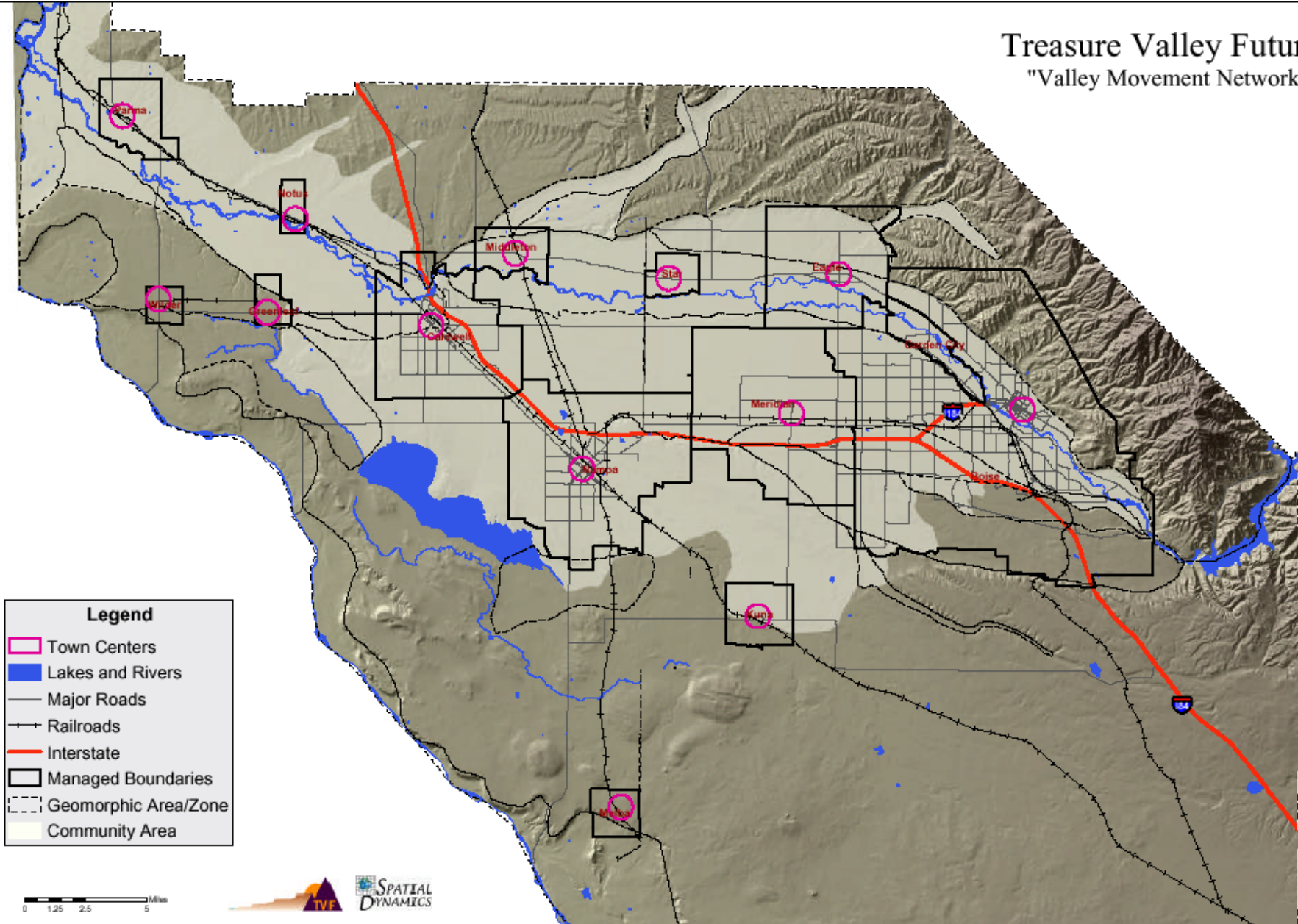


Treasure Valley Numbers:

	1990	2000	% Change
Housing Units	112,986	162,613	44%
Jobs	182,755	220,792	21%
Jobs/Housing	1.6	1.4	

VMT Increasing twice as fast
as population.

Treasure Valley Futures "Valley Movement Network"



Legend

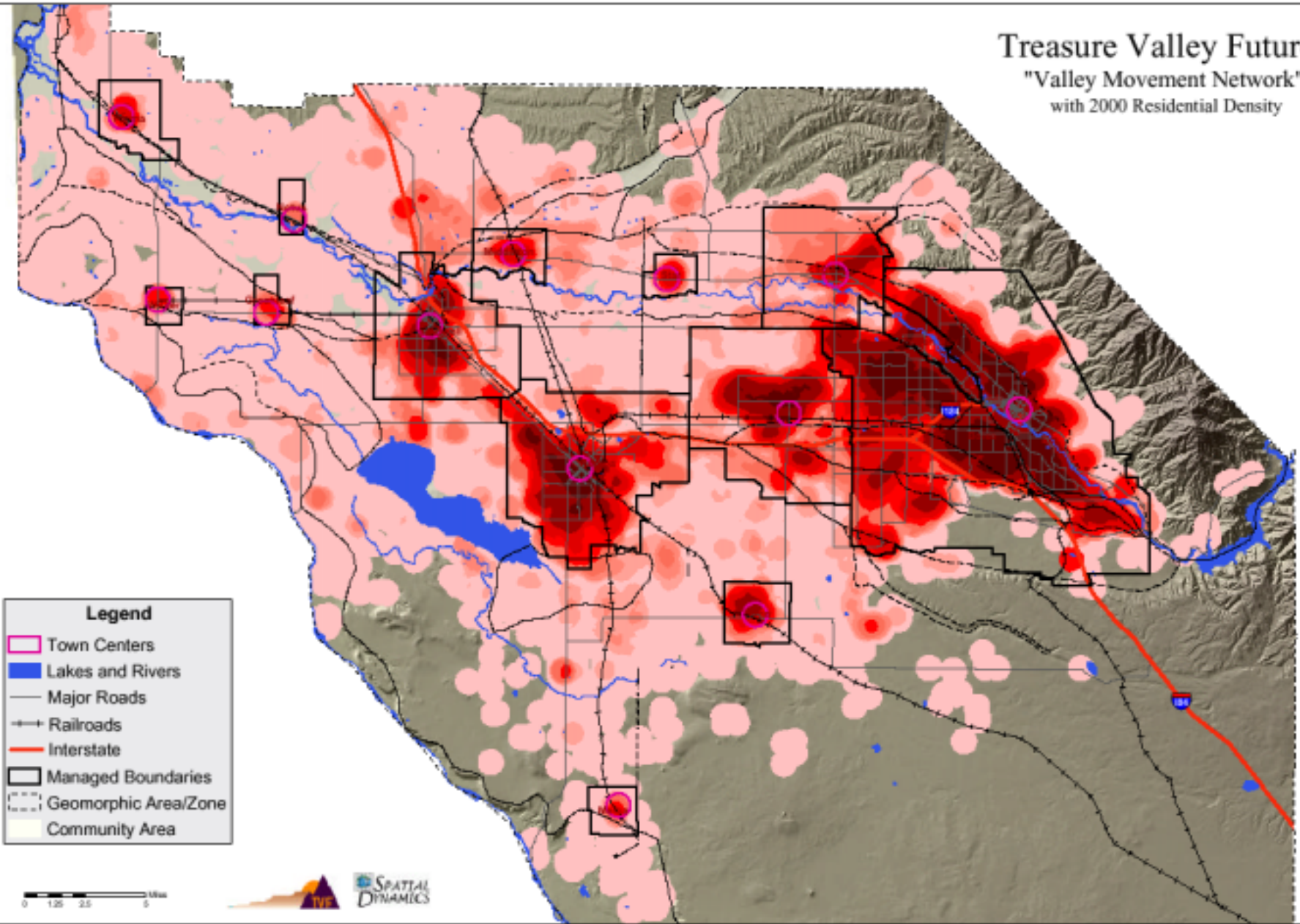
- Town Centers
- Lakes and Rivers
- Major Roads
- Railroads
- Interstate
- Managed Boundaries
- Geomorphic Area/Zone
- Community Area



Treasure Valley Futures

"Valley Movement Network"

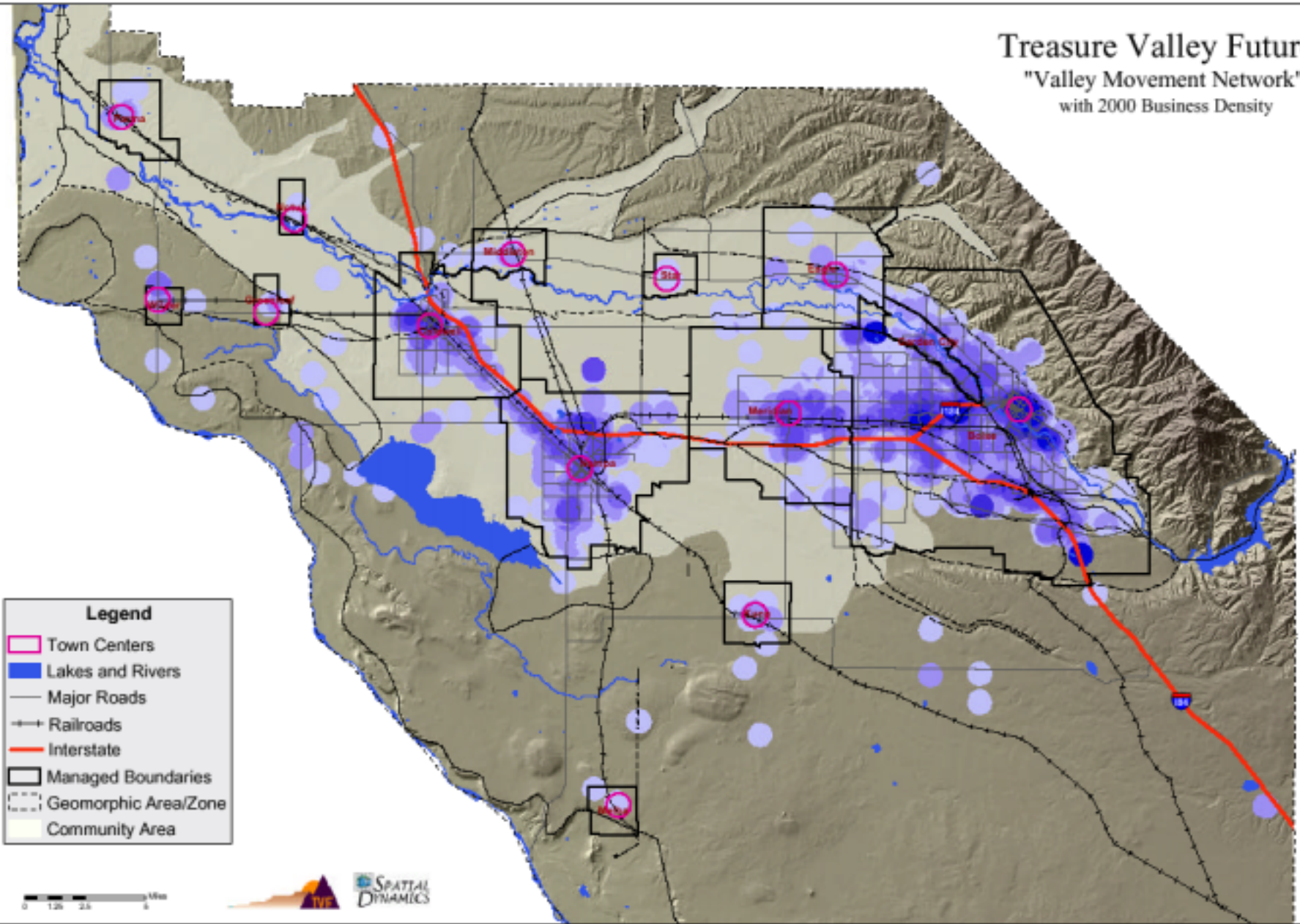
with 2000 Residential Density



Treasure Valley Futures

"Valley Movement Network"

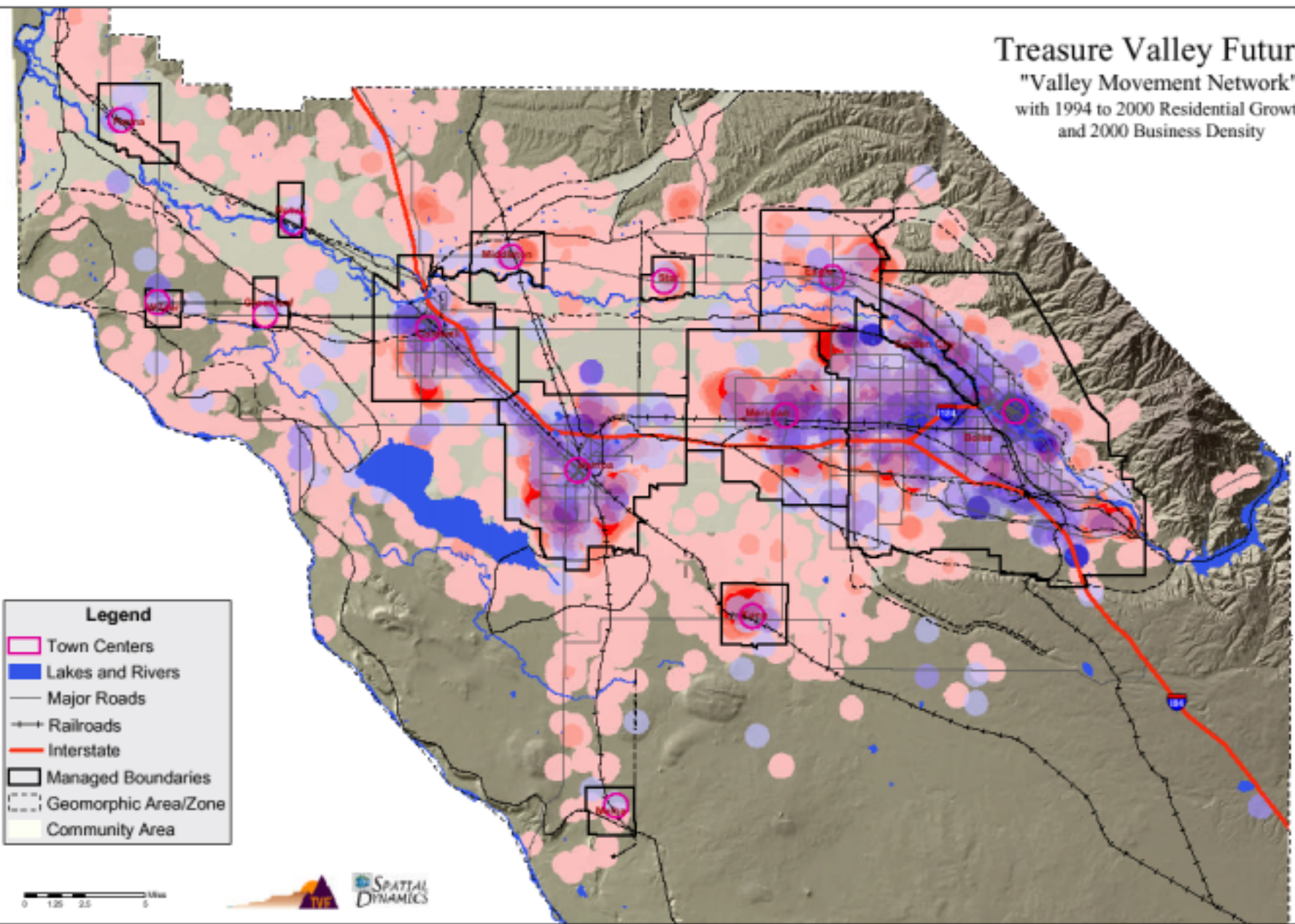
with 2000 Business Density



Treasure Valley Futures

"Valley Movement Network"

with 1994 to 2000 Residential Growth
and 2000 Business Density



- Legend**
- Town Centers
 - Lakes and Rivers
 - Major Roads
 - Railroads
 - Interstate
 - Managed Boundaries
 - Geomorphic Area/Zone
 - Community Area

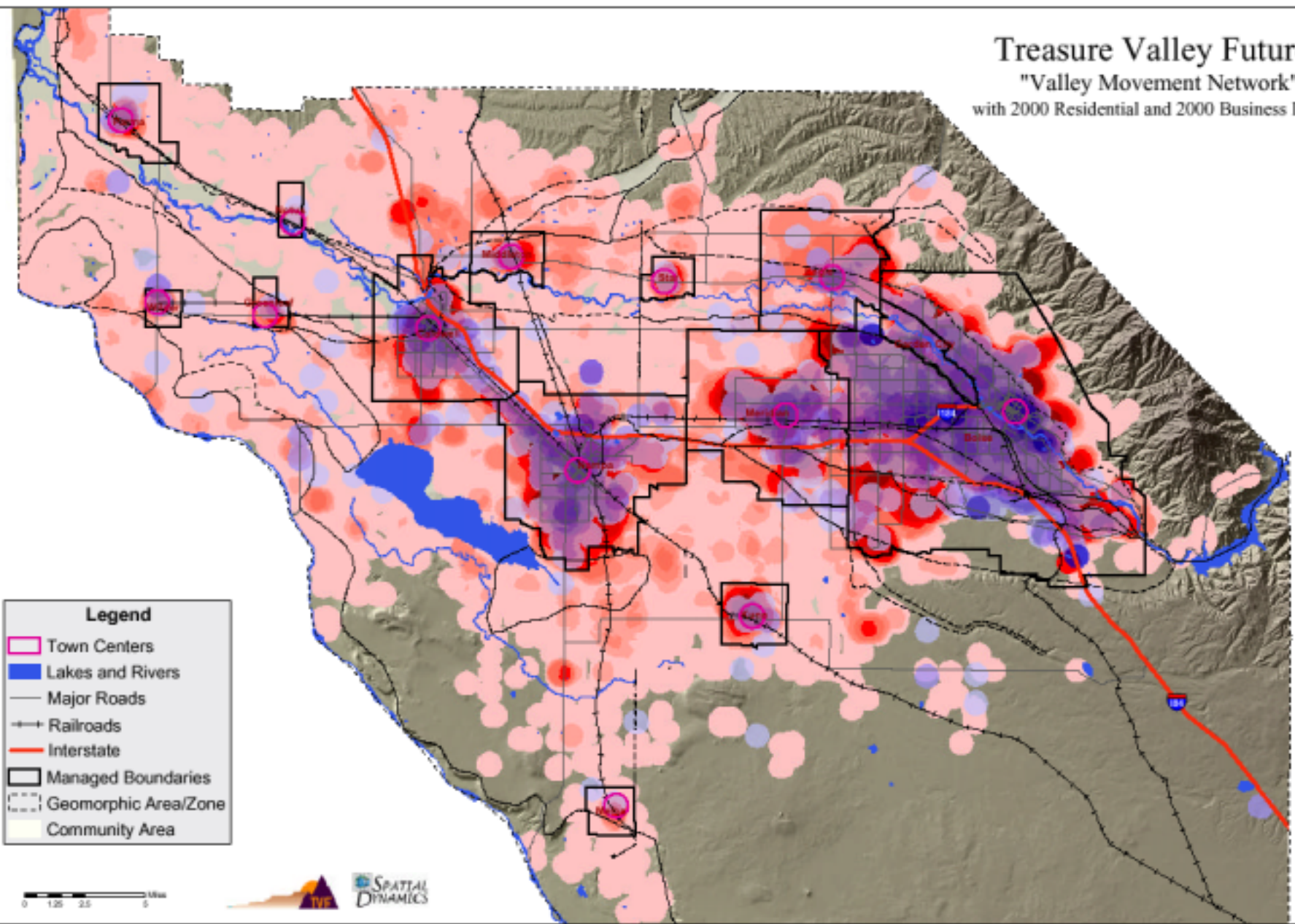
0 1.25 2.5 Miles



Treasure Valley Futures

"Valley Movement Network"

with 2000 Residential and 2000 Business Density



Legend

- Town Centers
- Lakes and Rivers
- Major Roads
- Railroads
- Interstate
- Managed Boundaries
- Geomorphic Area/Zone
- Community Area



Jobs and Housing

- About transportation, economic development, and community character
- Need to consider optimal spatial pattern of jobs in relation to housing
- Both jobs and housing are part of larger dynamic system
- Must understand the role of individual communities in regional context