



# CNU 25. Seattle

THE 25TH ANNUAL CONGRESS FOR THE NEW URBANISM | MAY 3-6, 2017



## WHAT IS A CONGRESS?

The annual Congress for the New Urbanism, now in its twenty-fifth year, is the premiere national event on building better places. Each year, 1300+ attendees convene to hear from speakers, participate in workshops, collaborate on projects, and learn new strategies from leaders in dozens of fields.

### FOLLOW THE ACTION ON SOCIAL MEDIA:

TWITTER:  
@NEWURBANISM  
#CNU25

FACEBOOK:  
NEWURBANISM

DOWNLOAD THE APP:  
CROWD.CC/CNU25

By attending CNU 25. Seattle you consent to be photographed, filmed, and/or otherwise recorded. Your entry constitutes your consent to such photography, filming, and/or recording, and to any use, in any and all media throughout the universe in perpetuity.



## CORE SESSIONS

Core sessions are in-depth primers on the history, principles, tools, and concepts of New Urbanism geared towards first-time Congress attendees or attendees who'd like to know the basics of a specific subject area. These one-hour sessions provide Congress attendees with the opportunity to hear from founding members and experts on New Urbanism. Core sessions are presented as a daylong series of lectures and are open to any and all Congress attendees.

## 202 WORKSHOPS

202 Workshops are advanced learning courses led by thought leaders and innovative practitioners. These sessions include high-level instruction that goes beyond that of a typical breakout session. 202 Workshops are longer—typically lasting three to four hours—and more in-depth; they're geared toward professionals who already know the basics. The courses are much more personal than breakout sessions and are hands-on and interactive. All 202 Workshops incur an additional fee.

## PLENARY SESSIONS

Plenary sessions bring the entire Congress together for a shared experience. They feature innovative and expert practitioners detailing the latest advances in urbanism.

## BREAKOUT SESSIONS

Breakout sessions are concurrent sessions that take place throughout the Congress, organized around several tracks or themes. Breakout sessions make up the heart of the programming on Thursday, Friday, and Saturday. Breakout offerings include sessions for first-time attendees and seasoned New Urbanists alike, allowing you to create an agenda that suits you.

## OPEN INNOVATION (OI)

In Open Innovation, attendees present a series of six-minute presentations clustered around loosely related topics. Open Innovation (designated as OI for short) showcases cutting edge work of members and attendees covering a variety of topics from brand new theories of urbanism still in the formation stage to completed projects available for critique.

## FORUMS

CNU Forums are 3-hour deep-dive sessions that feature multiple speakers and perspectives on some of the most challenging urban issues of the day.

# CNU 25 Program Overview

## CITY AS PLATFORM

Led by local experts, City As Platform sessions are hands-on, immersive learning sessions that bring together community groups, neighborhood residents, Congress attendees, and national experts for in-the-field collaboration on the challenges and successes of local communities.

City As Platform sessions are designed to address fine-scaled urbanism and can take many forms: group dialogue on neighborhood-specific issues, hands-on workshops intended to solve a local problem, interactive group brainstorms, and more. Sessions typically last three hours, including travel to and from the host neighborhood, and take place in neighborhoods across the host city.

## ART ROOM

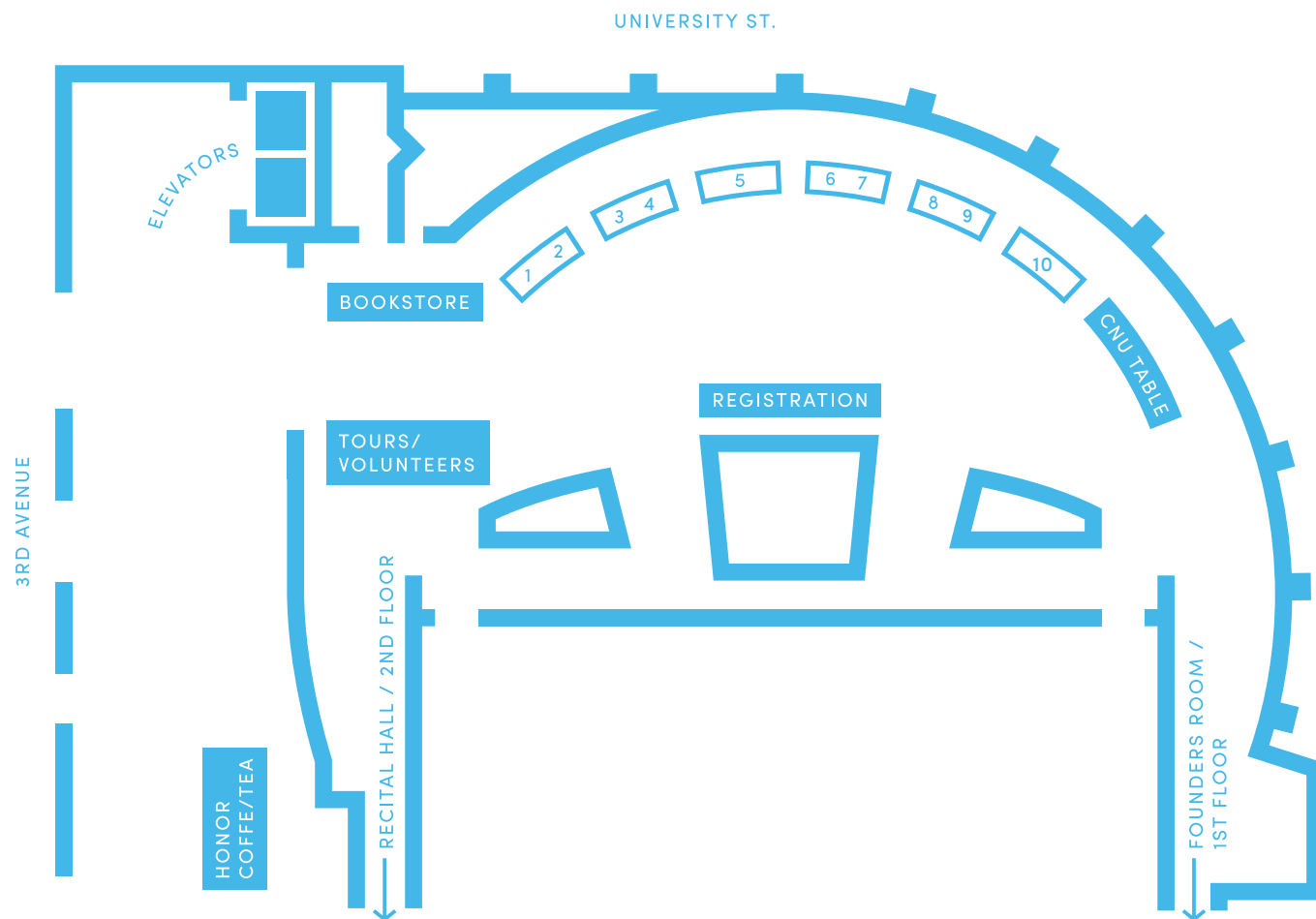
The CNU Art Room features up-close or hands-on workshops to help you hone your skills. Are you interested in learning design, sketching, illustration, photography, and other techniques from New Urbanism's leading practitioners? Here's your chance! Participants of all skill levels are welcome—no prior illustration or design experience is needed.

## MEMBER-LED

Led by CNU members, these 1-hour working meetings and discussions are meant to move an initiative, idea, or conversation forward. They are an excellent opportunity to get involved in shaping the work of the New Urbanism movement.



# Benaroya Grand Lobby Floorplan



# Exhibitors

## 1 LANDUSE|USA

landuseusa.com

A fresh approach to Target Market Analysis and Downtown Strategies, focused on migrating household preferences for Missing Middle Housing and shopping in urban places.

## 2 THE AMERICAN CONSERVATIVE

theamericanconservative.com/urbs

Through a regular feature in print and online, "New Urbs," The American Conservative magazine promotes the principles of traditional neighborhood design for strong communities.

## 3 GRIDICS

zonar.city

Zonar is a cloud-based application that assimilates GIS data, property records, and layers of zoning regulations to provide accurate zoning information and 3-D massing diagrams for individual land parcels, assemblages, transit corridors, and districts. Users can efficiently analyze their zoning codes, visualize proposed land use scenarios, master plan districts, and plan better cities.

## 4 DEEPROOT GREEN INFRASTRUCTURE

deeproot.com

DeepRoot products are high-quality tree care and stormwater management tools providing ecological function in urban areas. We have thousands of trees worldwide as living proof.

## 5 DPZ CoDESIGN

dpz.com

With over 35 years as architects and urbanists, DPZ has been leading the global movement to design beautiful, mixed-use communities that are environmentally responsible, economically sustainable, and socially integrated. DPZ creates places and spaces that stand out as much as they fit in.

## 6 TOWN PLANNING & URBAN DESIGN COLLABORATIVE (TPUDC)

tpudc.com

TPUDC is a national multi-disciplinary firm that specializes in urban design, land use regulations, and public process. We exclusively work on projects that emphasize walkable, compact, diverse, mixed-use, pedestrian-friendly environments and memorable places that withstand the test of time. TPUDC has worked with municipalities, developers, and non-profit organizations across the country.

## 7 PARAMETRIX

parametrix.com

Parametrix is an engineering, planning, and environmental sciences firm with offices located throughout the Western US. The firm provides solutions in community building, land development, and associated services.

## 8 METRO ANALYTICS

metroanalytics.com

Metro Analytics created StreetPlan.net, a free Complete Street Cross-Section design tool. Metro also specializes in Place-Making Intersection design, to convert Stroads to Walkable Boulevards.

## 9 ANDREW HOYNE DESIGN PTY LTD

hojne.com.au

The Place Economy is an invaluable and inspiring resource book by leading place and brand consultants Hoyne that looks at the social and economic benefits of best practice placemaking around the world.

## 10 UNIVERSITY OF NOTRE DAME, SCHOOL OF ARCHITECTURE

architecture.nd.edu

Unique in its focus on traditional architecture and urbanism, the University of Notre Dame School of Architecture is committed to the making of well-designed, livable cities and towns.



Seattle's nickname is "The Rainy City," although Seattle gets less annual rainfall than New York, Houston, Boston, and Atlanta.



# Congress Venues

## 1 BENAROYA HALL

200 University St  
 All tours, unless otherwise specified, meet at the tours desk in the Grand Lobby.  
 ★ Entrance on 3rd Ave, near University.

Recital Hall, 2nd Floor  
 Founders Room, 1st Floor  
 Grand Lobby, 1st Floor  
 Registration and Tour Desk, Grand Lobby

## 2 SEATTLE ART MUSEUM (SAM)

300 First Ave  
 ★ Entrance on First Ave & University

Plestcheeff Auditorium, 1st Floor  
 Nordstrom Lecture Hall, 1st Floor  
 Simons Board Room, 1st Floor  
 Arnold Board Room, 2nd Floor

## 3 MOORE THEATRE

1932 2nd Ave

## 4 WASHINGTON STATE CONVENTION CENTER

705 Pike St

## 5 SEATTLE CENTRAL LIBRARY

1000 4th Ave  
 4th Floor, Room 1

## 6 1927 EVENTS

1927 3rd Ave

## 7 SPACE AT THE STEPS - GGLO

1301 1st Ave

## 8 PIKE PLACE MARKET

Lunch option

## 9 PIONEER SQUARE

Lunch option

## 10 WEST LAKE CENTER AND PARK

Lunch option

## 11 MOTIF HOTEL SEATTLE

1415 5th Ave, Host hotel

## 12 KIMPTON HOTEL VINTAGE SEATTLE

1100 5th Ave, Host hotel

## 13 HOTEL MONACO

1101 4th Ave, Host hotel

# Wednesday at-a-Glance

TUESDAY		SAM Plestcheeff Auditorium	SAM Nordstrom Lecture Hall	SAM Simons Board Room	SAM Arnold Board Room	Seattle Central Library	Benaroya Hall, Recital Hall
8AM	Benaroya Hall, Recital Hall	Breakfast: Grand Lobby					Orientation Breakfast: Founders Room
9AM		Core: Principles of New Urbanism	The Tactical Urbanist's Guide to Civic Engagement, Materials & Street Design	202 / Workshop: Community Oriented Housing	202 / Workshop: Project for Code Reform Workshop 9 AM-4:30PM OFF-SITE AFTERNOON	202 / Workshop: Pro-Equity Development Training	
10AM	Seattle Small Development Seminar at GGLO						
11AM		Core: Transit-Oriented Development	OI: Multi-Modal Transportation: New Solutions to Old Problems				
12PM		Lunch: Pike Place Market / Westlake / Pioneer Square / Nearby					
1PM		Core: Climate Change & Urban Heat Island					
2PM		Core: Street Networks & Connectivity	Beyond the Charrette	202 / Workshop: Art Room: Architectural Design Techniques of Classic European Urbanism	202 / Workshop: Practitioner's Guide to Multimodal Street Design	202 / Workshop: Utilizing Affordable Housing to Catalyze TOD	
3PM							
4PM		Core: The Region					Public Event: Autonomous Vehicles & The Good City
5PM	Welcome Reception at Grand Lobby						Plenary: Joe Biden at Washington State Convention Center
6PM	Public Event: Combating the Suburbanization of Poverty						
7PM							Chapter Meet-Ups: Capiol Hill
8PM							
9PM							
10PM							

# Thursday at-a-Glance

	SAM Plestcheeff Auditorium	SAM Nordstrom Lecture Hall	SAM Simons Board Room	SAM Arnold Board Room	Benaroya Hall, Recital Hall	Benaroya Hall, Founders Room
8AM	Breakfast: Grand Lobby					
9AM	Missing Middle Housing v2: Helping Cities Address 21st Century Challenges	The Next Baby Boom: The Future of Families in Cities	Art Room: Charrette Drawing Techniques	Majestic Canopies & The Hidden Life of Street Trees	Next 25 Years: Todd Zimmerman Dhiru Thadani June Williamson	Our Failures: Lessons from 25 Years of New Urbanism
10AM						
11AM	Addressing the Immigration & Homeless Crises	RIP LOS: Protecting the Environment Trumps Protecting Auto Travel	Art Room: Evocative Color & Light	Does Your Zoning Fully Implement Your Policy Direction?	Next 25 Years: Elizabeth Christoforetti Boaz Ashkenazy Lisa Picard	The Next 25 Years Roundtable
12PM	Lunch: Pike Place Market / Westlake / Pioneer Square / Nearby					
1PM	Member-Led: UrbanFootprint	Member-Led: Architects of Community	Member-Led: Urban Landscape Council	Member-Led: Working for Common Good		Lessons from Legacy Projects
2PM						
3PM	A Future Without Urban Freeways	Forum: International Next City Forum	Art Room: Brand Design	OI: Diversity, Affordability, & Social Equity	Next 25 Years: Karen Minkel Jarrett Walker Jonathan F.P. Rose	Stress Testing Codes for Missing Middle Buildings
4PM						
5PM	Undoing Exclusionary Zoning in High-Cost Cities		Art Room: TOD Design Techniques	Beers with Engineers	Next Generation Parking Strategies at All Scales	Next 25 Years: Larry Frank Jeff Risom
6PM					Reception	
7PM					Plenary: The Past and Future City	
8PM						
9PM			Conservation on Tap at The Alibi Room	New Urban Film Festival at Northwest Film Forum	NextGen Belltown Pub Crawl	
10PM						

# Friday at-a-Glance

	SAM Plestcheeff Auditorium	SAM Nordstrom Lecture Hall	SAM Simons Board Room	SAM Arnold Board Room	Benaroya Hall, Recital Hall	Benaroya Hall, Founders Room
8AM	Breakfast: Grand Lobby				CNU Members Christian Caucus at Mezzanine, Grand Lobby	Small Developer Morning Meet-up
9AM	Diversifying Urban Design	Transportation, Place, & Prosperity	Art Room: Walkable Street Design 01 - Technical Essentials		Retrofitting Water	Breaking Down Barriers to Incremental Development
10AM						
11AM	Plenary: Doug Farr & Majora Carter at Moore Theatre					
12PM	Lunch: Pike Place Market / Westlake / Pioneer Square / Nearby					
1PM	Member-Led: Complete Streets + Context	Member-Led: Implementing the New Urban Agenda	Member-Led: You CAN Finance New Urban!	Member-Led: Form-Based Codes		
2PM						
3PM	Forum: Autonomous Vehicles & Urbanism	The Intersection of Historic Preservation & New Urbanism	Art Room: Walkable Street Design 02 - Artistic Placemaking	Architecture & Urban Character		OI: Meeting Our Housing Needs
4PM						
5PM		Seeding Urbanism in Latin America	Art Room: Seeing the Better City, Making a Better Place	Take Action on Inclusive, Sustainable Urbanism	Next 25 Years: Joe Minicozzi, Andres Duany & Paul Crabtree	
6PM					Reception	
7PM					2017 Charter Awards Ceremony	
8PM					Strong Town Debates at 1927 Events	
9PM						
10PM					CNU 25 Dance Party at 1927 Events UNTIL 11:30PM	

# Saturday at-a-Glance

	SAM Plestcheeff Auditorium	SAM Nordstrom Lecture Hall	SAM Simons Board Room	In-The-Field
8AM	Breakfast: Seattle Art Museum			
9AM	The Thirty Years War: New Urbanism & The Academy	OI: Employing Lean Thinking	New Urban Research at Arnold Board Room	<b>City as Platform: How Green Stormwater Infrastructure Can Help Urban Neighborhoods Thrive</b>  Gentrification & The Threat To Black Churches In Central Seattle  Crossing The Canyon: Designing Freeway Lids To Reconnect Seattle  Rainier Arts Center (Re)Design: Arts & Community
10AM				
11AM	OI: Civic Great Rooms: A Remodeler's Guide	OI: New Urbanist Communications Modalities	New Urbanism & The Climate Crisis	
12PM	Lunch: Pike Place Market / Pioneer Square / Nearby			
1PM	Lunch: Pike Place Market / Pioneer Square / Nearby			
2PM	Lean Urbanism Debates	OI: Architecture & The Zeitgeist	Member-Led: Intersectional Feminism & The New Urban Agenda 12:30 - 1:45 PM	<b>City as Platform: Lake City Future First: Activating Public Space</b>  King Street Enhanced Greenway: Reimagining Our Rights To Our Rights-Of-Way  Sharing Seattle: How To Create Housing That Fosters Radical Sharing
3PM				
4PM	OI: Locations for Lean Urbanism	OI: Sustainability & Resilience		
5PM				
6PM	Closing Party at Queen Anne Beer Hall			
7PM				
8PM				
9PM				
10PM				

## 25 GREAT IDEAS OF NEW URBANISM <sup>(25)</sup>

The 25 Great Ideas of the New Urbanism—an ongoing series on Public Square: A CNU Journal—highlight the great ideas that have been shaped by new urbanists and continue to influence cities, towns, and suburbs. This series is meant to inspire and challenge those working toward complete communities in the next quarter century. This icon indicates sessions that embody these great ideas.

## CNU URBANISTAS

Follow: #CNUUrbanistas

In the spirit of amplifying the voices of women to make cities better for everyone, there will be happenings occurring each day that serve as opportunities to meet, think, collaborate, empower, and support one another.

The dates and times for the meetings, events, and activities can be found at [facebook.com/groups/CNUUrbanistas](https://facebook.com/groups/CNUUrbanistas) or on Twitter at #CNUUrbanistas.

## SELF-GUIDED TOURS

[cnu.org/cnu25/schedule/self-guided-tours](https://cnu.org/cnu25/schedule/self-guided-tours)

CNU 25 Seattle self-guided tours offer a unique opportunity to explore Seattle neighborhoods at your leisure. Curated by locals for visiting urbanists, these self-guided tours highlight the best public spaces, cafes, breweries, and points of interest. From the beach town vibes of West Seattle to the northern reaches of Ballard Avenue's historic district, there's a destination for everyone.

Check out tours on the CNU 25 App or at [cnu.org/cnu25/schedule/self-guided-tours](https://cnu.org/cnu25/schedule/self-guided-tours)

# Tuesday Pre-Congress

# Wednesday 5/3

## Morning

### **TOUR: SEATTLE SATELLITE TOWN SPURS NW COASTAL RENEWAL**

7:30 AM-7:30 PM, Tours Desk / Benaroya Lobby

From the Gold Rush to the Tech Revolution, the Pacific Northwest has long been known for its boomtown growth patterns. In this tour, participants will explore Seabrook, WA, a planned community that has added a rush of New Urbanist tourism to Grays Harbor County, WA's natural resource-based economy. Seabrook aims to revive traditional town-building in a scenic location nestled between the Pacific coast and Olympic National Park, providing a new vision for sustainable prosperity and civic pride in a region shaped by both boom and bust throughout its history.

Stephen G. Poulakos, Director of Town Development, Seabrook Land Company / Laurence Qamar, Principal, Laurence Qamar Architecture & Town Planning Co. / Casey Roloff, Town Co-founder, Town of Seabrook / Laura Roloff, Town Co-Founder, Town of Seabrook

### **SEATTLE SMALL DEVELOPMENT SEMINAR**

10:00 AM-4:30 PM, GGLO's Space at the Steps, 1301 1st Ave

This seminar is a highly condensed version of our one-day workshop. For reference, you can find a course overview and more information about our workshops and who should attend here.

This event is organized by the Incremental Development Alliance. Register at [incrementaldevelopment.org/events/seattle2017](http://incrementaldevelopment.org/events/seattle2017).

John Anderson, Principal, Anderson|Kim Architecture + Urban Design / Jim Kumon, Executive Director, Incremental Development Alliance

## Evening

### **REGISTRATION**

5-7 PM, Grand Lobby / Benaroya Hall

Pick up your badge, bag, and printed program at the Registration Desk and interact with exhibitors in the Grand Lobby of the Benaroya Hall.

### **WELCOME RECEPTION**

5-6 PM, Grand Lobby / Benaroya Hall

Join CNU and CNU Cascadia for a special welcome reception in the Grand Lobby of the Benaroya Hall.

### **COMBATING THE SUBURBANIZATION OF POVERTY**

6-8 PM, Recital Hall / Benaroya

The increasing suburbanizing poverty in the Puget Sound basin has been well-documented but the implications on regional equity and social justice are less clear. This event will explore regional and national solutions to this critical issue.

This trend in destabilization and relocation has only intensified as the area economy has soared. As prosperous newcomers flock to the urban core, tremendous strains are placed on struggling families and communities, pushing more toward suburban communities where poverty alleviation services are weak, commute times are long, and social fabric may be thin. Even more nascent is a coordinated response on the part of key actors from the public, private, civic, and philanthropic sectors.

Join local and national experts as they describe suburbanizing poverty regionally, explore implications on governance and service provision, and find common ground in advancing pro-equity development in the face of economic dislocation. Local leaders from Seattle and Tukwila will share how they see impacts and trends and national experts will shine light on how to strengthen housing, jobs, policies, businesses and economic opportunities for low-income residents and communities of color.

Welcoming panelists and audience is nationally known singer and performer, Chenoa Egawa, a ceremonial leader and environmental activist, who will ground the discussion in the local culture and traditions.

This Congress kick-off event is free and open to the public.

Scott Bernstein, President, Center for Neighborhood Technology / Chenoa Egawa, Coast Salish of the Lummi and S'Kallam Nations of Washington State / Charles Ellison, Washington Correspondent, The Philadelphia Tribune / Elizabeth Kneebone, Fellow, Metropolitan Policy Program, Brookings Institute / De'Sean Quinn, Water Quality Planner and Project Manager, King County Department of Natural Resources and Parks / Kim Powe, Deputy Director (Acting), Puget Sound Sage / Dow Constantine, King County Executive / Rebecca Saldaña, Washington State Senator / Gene Duvernoy, President, Forterra

ALL 202 WORKSHOPS AND TOURS REQUIRE AN ADDITIONAL FEE. PLEASE VISIT THE REGISTRATION DESK IN THE GRAND LOBBY OF THE BENAROYA HALL TO REGISTER

## Morning

### **REGISTRATION**

7 AM-7 PM, Grand Lobby / Benaroya Hall

Pick up your badge, bag, and printed program at the Registration Desk and interact with exhibitors in the Grand Lobby of the Benaroya Hall.

### **ORIENTATION BREAKFAST FOR FIRST-TIME ATTENDEES**

8-9 AM, Founders Room / Benaroya

First-time attendees are invited to participate in this informational orientation breakfast. Leaders of the Congress for the New Urbanism will guide you through Congress events and sessions.

### **BREAKFAST**

8-9 AM, Grand Lobby / Benaroya Hall

Enjoy a continental breakfast in the stunning Grand Lobby of Benaroya Hall.

## Form Follows Finance 2017 You CAN Finance New Urban!

### **Come hear about Freddie Mac's "Small Balance Loan" program:**

- ▶ Expedited processing for loans up to \$7.5 million with up to 40% non-residential
- ▶ Further non-res possible on exception basis, e.g., with affordable housing
- ▶ \$3.7 billion for 1600+ loans in 2016

**Friday, May 5 / 12:45 PM - 2:00 PM**

Simons Board Room / Seattle Art Museum

Presentation by **Ben Schweitzer**, Underwriting Director, Small Balance Lending, Freddie Mac Multifamily

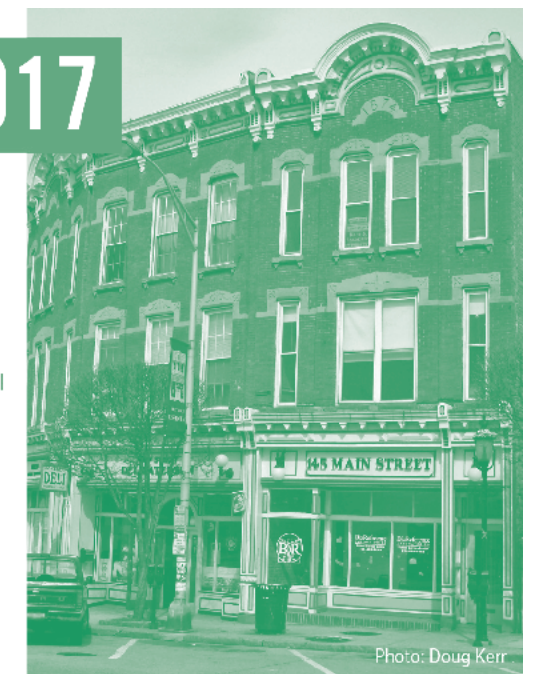


Photo: Doug Kerr



Also see 2016 RPA report

*The Unintended Consequences of Housing Finance.*

<http://bit.ly/housing-finance>

# Wednesday Core Sessions

9 AM–4:30 PM  
PLESTCHEEFF AUDITORIUM / SAM

## 25 CORE: THE PRINCIPLES OF NEW URBANISM

9-10:30 AM, Plestcheeff Auditorium / SAM

New urbanists measure success by aligning practical strategies with the principles most identified with places people love. Andres Duany, one of the founders of the movement, talks about the components of community, the failure of post-WWII planning to deliver them, and what new urbanists have learned about restoring relationships between planning, design, and great places.

Andrés Duany, Principal, DPZ CoDESIGN

## 25 CORE: TRANSIT-ORIENTED DEVELOPMENT

11 AM-12 PM, Plestcheeff Auditorium / SAM

As the demand for walkable, transit-connected places grows, Transit-Oriented Development (TOD) is one of the most effective tools municipalities and transit agencies can use to increase density, provide affordable housing, and improve land values. Equitable TOD can help communities remain attractive, build sustainability, and make it easier for people to get around. This session takes a deep dive into existing TOD case studies and research—including market analysis, value creation, and value capture—to uncover the most important steps for equitable transit-oriented development.

Shelley R. Poticha, Director, Urban Solutions, Urban Program, Natural Resource Defense Council

## CORE: CLIMATE CHANGE & URBAN HEAT ISLANDS

1-2 PM, Plestcheeff Auditorium / SAM

Climate change is a long-term planetary problem that is qualitatively and quantitatively unprecedented. Cities have long played a central role in human survival and evolution, and will continue to do so as we combat climate change.

Despite the fact that mixed-use, walkable, transit-served cities in developed nations have lower carbon footprints per person than their hinterlands, Urban Heat Islands are heating up cities twice as fast as climate change, potentially deterring people from moving to or staying in cities. And in developing nations, cities have lower birth rates than rural areas, thereby reducing the earth's total carbon footprint. Fortunately, addressing UHIs simultaneously reduces climate change. Because they are a more immediate, manageable challenge, people are more inclined to address UHIs, thereby rallying them in the war against climate change. This timely session illustrates how cities and towns can address Urban Heat Islands.

Doug S. Kelbaugh, FAIA, Professor of Architecture and Urban Planning, Taubman College of Architecture and Urban Planning, University of Michigan

## 25 CORE: STREET NETWORKS & CONNECTIVITY

2:15-3:15 PM, Plestcheeff Auditorium / SAM

Street networks are the backbone upon which we build complete and connected communities. Well-connected street networks not only accommodate a region's access and mobility needs, but also help determine the location, type, and form of land development. These days the skills needed to design street networks are no longer part of the typical repertoire of engineers and planners in America. This session explores the history, art, and key characteristics of the well-design street networks and discusses how these characteristics work in tandem to reduce household costs, traffic injuries, and greenhouse gas emissions.

Norman W. Garrick, Associate Professor, Civil and Environmental Engineering, University of Connecticut

## CORE: THE REGION

3:30-4:30 PM, Plestcheeff Auditorium / SAM

The last half century has seen the rise of a social and commercial geography that fuses town, city, and suburb into a new but unresolved order—the metropolitan region. To many, it's clear that the economic building blocks of the global economy are regions—not nations, states, or cities. It's equally clear that many of our environmental challenges—air and water quality, habitat restoration, and farmland preservation—are regional in scope. Urban thought-leader and CNU co-founder Peter Calthorpe shares his framework for the 21st-century metropolitan region, drawing on 30+ years of national and international practice.

Peter Calthorpe, Principal, Calthorpe Associates

# Wednesday 202 Workshops

9 AM  
ALL 202 WORKSHOPS AND TOURS REQUIRE  
AN ADDITIONAL FEE. PLEASE VISIT THE  
REGISTRATION DESK IN THE GRAND LOBBY  
OF THE BENAROYA HALL TO REGISTER

## 202 WORKSHOP: PRO-EQUITY DEVELOPMENT TRAINING

9 AM-12 PM, Seattle Central Library / 4th Floor, Room 1

Inclusivity. Fairness. Healing. This three hour workshop builds the sensitivities and competencies to reveal and address equity considerations and opportunities in planning communities of all scales. The session starts with a short exercise in cultural competency then walks you through the steps of equity considerations. The project moves the audience towards a holistic and inclusive model for framing and driving toward a pro-equity approach to design and planning a project. Case studies and table exercises push participants to build competencies in equity assessment, inclusive engagement, equity impact review, and the array of design and development considerations that bear on equity outcomes.

Nori Catabay, Green Building Team Program Manager, King County GreenTools / Richard Gelb, Performance Management Lead, King County Department of Natural Resources and Parks / Patti Southard, Program Manager, King County GreenTools / De'Sean Quinn, Water Quality Planner and Project Manager, King County Department of Natural Resources and Parks

## 202 WORKSHOP: COMMUNITY- ORIENTED HOUSING

9 AM-12 PM, Simons Board Room / SAM

Between developer-driven housing and resident-driven cohousing lies a market that is not being tapped. Across all age groups there is a rising desire for community-oriented living, especially in walkable neighborhoods, yet the demand is left unmet. On one hand, developers of incremental small-scale residential projects can be skittish about getting involved with community dynamics, leaving the new residents on their own to figure out the community part. On the other hand, pioneering cohousing

wannabees are trudging through a gruelling process of land acquisition, entitlement, financing, site planning, design and construction—with many falling to the wayside before opening day. There is a middle path to delivering socially healthy community housing.

In this engaging session, three designer-developers will share their stories and insights about designing and developing community-oriented housing models at varying sizes and transect locations. They will outline the design elements of small-scale pocket neighborhoods that foster healthy, engaged communities while preserving the need for personal space. They will demystify the soft side of creating community so it becomes more approachable by developers. In breakout groups, participants will use their new understanding to design community-oriented housing in both infill settings and larger sites, and then reflect together on key design patterns.

Ross Chapin, Principal, Ross Chapin Architects / Grace H. Kim, Architect and Principal, Schemata Workshop / Eli Spevak, Developer and Principal, Orange Splot LLC

## 202 WORKSHOP: PROJECT FOR CODE REFORM WORKSHOP

9 AM-4:30 PM, Arnold Board Room / SAM

Seattle is known for its expertise in entrepreneurial ideas and methods. Lean Codes and the CNU Project for Code Reform seriously up equity and social justice in an innovative urban way. We'll start the on-site workshop with reviewing the barriers to development through the Seattle zoning code with input from the City of Seattle's Planning Department. We'll review lean code approaches with the goal of facilitating equitable, walkable development. Then we'll head out on a walking tour through Downtown to assess what it takes to get urbanism right: What are the most critical frontage issues? How do we incentivize redevelopment with the fewest barriers to entry?

We will consider the surrounding walkable, livable neighborhoods for inspiration. We'll end the walking tour, which will serve as our studio for the afternoon. Here, we'll develop urban triage solutions that can be built into the Seattle code, review form-based code typical regulations, and develop a map to delineate where S, M, L, XL solutions make sense along A-Grid + B-Grid. At the end of the day, each group will present studio work to the faculty and locals for critique. We'll wrap up the day discussing common pitfalls.

Hazel Borys, Managing Principal, PlaceMakers / Susan Henderson, AIA, LEED AP, CNU-A, Principal, PlaceMakers LLC / Jennifer Hurley, AICP, NJPP, CNU-A, President & CEO, Hurley-Franks & Associates / Marina Khoury, Partner, DPZ CoDESIGN / Matthew Lambert, Partner, DPZ CoDESIGN



**25 THE TACTICAL URBANIST'S GUIDE TO CIVIC ENGAGEMENT, MATERIALS & STREET DESIGN**

9-10:15 AM, Nordstrom Lecture Hall / SAM

Communities around the world are embracing an incremental approach and grassroots energy to plan and implement neighborhood improvement projects. A persistent challenge in the pursuit of short-term street redesign projects involves materiality and guidance for implementation. This breakout session shares the latest research in temporary street demonstration projects, their materiality, and the policies that help inform them. The session will discuss standardized guidance for design, materials, and safe implementation of common urban design pilot projects (crosswalks, curb extensions, bikeways, plazas etc.), especially as they relate to achieving street safety goals like those outlined in Vision Zero. Participants will discuss how demonstration projects should be integrated with the public planning process, and can help inform the policies that create pilot projects. The session panel will share standards for process, design, and materials, allowing city departments and community groups to “speak the same language” and collaborate on pilot projects that improve the streets and neighborhoods in their communities. Case studies will include ongoing projects in Burlington, Vermont and Miami-Dade County.

Julie Flynn, Project Director, The Street Plans Collective / Anthony T. Garcia, Principal, The Street Plans Collaborative / Mike Lydon, Principal, The Street Plans Collaborative

**BREAK**

10:15-10:45 AM

Grab coffee, tea, and other refreshments in the Grand Lobby of the Benaroya or Lobby of the Seattle Art Museum.

**OI: MULTIMODAL TRANSPORTATION: NEW SOLUTIONS TO OLD PROBLEMS**

10:45 AM-12 PM, Nordstrom Lecture Hall / SAM

These days, we almost take for granted a sustained effort to challenge the status quo of transportation planning and design. New ideas are being minted all the time, and, at least in our large to mid-size cities, traffic engineering departments are getting wise to the benefits encouraging more active modes of transportation. This session highlights new thinking and new approaches in transportation planning, including ways to accelerate the implementation of bicycle boulevards, to employ new interactive tools for better street design at all scales, and to characterize cycling types and their influence on the built environment.

Presenters will also examine once far-off transportation concepts, such as autonomous vehicles, urban gondolas, and integrated mobility hubs. This session fundamentally challenges how we get around now and into the 21st century, and what opportunities new technologies and new thinking creates.

Tim Frisbie, Communications & Policy Director, Shared Use Mobility / Aaron Lubeck, Director, Durham Bicycle Boulevards / Don Miskiman, Associate Professor, University of the Fraser Valley / Kelly Rodgers, Executive Director, Streetsmart / Chris Saleeba, Senior Associate, Alta Planning + Design / Erin Tarkington, Vice President, RCLCO, Urban Development Group / Anthony Catania, Project Architect, Torti Gallas and Partners / Larry Gould, Principal, Nelson\Nygaard / Michael Mabaquiao, Designer, Torti Gallas & Partners / Evan Corey, Shared Mobility Program Manager, Seattle Department of Transportation

**Afternoon**

**LUNCH**

12-1:30 PM

Lunch on your own. Stroll through Pike Place Market, visit the food trucks at Westlake Park, or dine in nearby Pioneer Square. Or if you're in a hurry, grab lunch in the Benaroya's cafe area.



Seattle has the largest houseboat population in the United States.

**TOUR: GREATIST HITS: CHART TOPPERS AND HEART-STOPPERS**

1-3 PM, Tours Desk / Benaroya Lobby

It's a new riff on the city as we focus on the construction, context, and culture which shaped our skyline, from golden oldies like Kirtland Cutter's Rainier Club to popular favorites like the Rem Koolhaas' asymmetric, cantilevered Central Library. You'll develop an appreciation for the social forces which shaped Seattle and our built environment. Featured stops include the Fifth & Madison Condominium/901 Fifth Ave Plaza and Seattle City Hall.

This tour is in partnership with the Seattle Architecture Foundation.

**TOUR: REIMAGINING SEATTLE'S WATERFRONT**

1-4 PM, Tours Desk / Benaroya Lobby

In this tour, Congress attendees will examine the progress and vision of Waterfront Seattle, a multi-year program to transform Seattle's waterfront following the removal of the Alaskan Way Viaduct. Spanning from Pioneer Square to Belltown, the project area includes new park space, improved connections to and from downtown, a new surface street, access to Elliott Bay, and a rebuilt Elliott Bay Seawall. Led by the director of the Office of the Waterfront, participants will discuss design efforts to capitalize on view opportunities, project partners like the historic Pike Place Market, and the challenges and opportunities of removing an elevated highway to open up a waterfront.

Marshall Foster, Director, Office of the Waterfront, City of Seattle / Wren McNally, Associate, EnvirolIssues

**TOUR: COLUMBIA CITY - A STREETCAR SUBURB TRANSFORMED**

1-4 PM, Tours Desk / Benaroya Lobby

One of the nation's most ethnically diverse communities, Columbia City is a historically Hispanic streetcar suburb undergoing a light rail-driven transformation and a mixed-income development boom. Explore this fast-changing district where over 59 languages spoken, from the new HOPE VI project at Rainier Vista to the reemerging Columbia City Farmer's Market, on a community- and people-focused tour led by local business leaders, developers, and residents.

Rob Mohn, President, RAM Columbia LLC / Chris Curtis, Executive Director, Seattle's Neighborhood Farmers Market / Anthony Maschmedt, Principle, Dwell Development / Tom Phillips, retired, former Senior Development Manager, Seattle Housing Authority

**TOUR: POCKET NEIGHBORHOODS NEAR SEATTLE**

1-4 PM, Tours Desk / Benaroya Lobby

Pocket Neighborhoods are small clusters of houses or apartments arranged around garden courtyards, pedestrian streets, and indoor atriums. Located beyond a front gate but off the street, their shared common areas offer a safe space for spontaneous conversations, children's play, gardening, and community potlucks. Whether in single housing clusters on infill sites, or sub-neighborhoods within larger mixed-use developments, their sociable scale make them building blocks for engaged, resilient communities.

In this tour, participants will visit two pocket neighborhood communities near Seattle that pioneered this new prototype for housing development. Along the way, we'll learn about historic precedents, the zoning and approval pathways that enable such projects, and the key design patterns that make them successful.

\*This tour dovetails with a morning 202 Workshop on Community-Oriented Housing.

Ross Chapin, Principal, Ross Chapin Architects / Karen DeLucas, Associate, Ross Chapin Architects

**TOUR: 19TH & 21ST CENTURY INFRASTRUCTURE - FITTING MODERN INFRASTRUCTURE IN HISTORIC DISTRICTS**

1-4 PM, Tours Desk / Benaroya Lobby

Walk Seattle's original neighborhood, Pioneer Square, and witness the fusion of modern transportation and the community's historic character. See recent interventions that meet in the middle, including a new bike rack, reimagined alleys, and creative ADA retrofits. Learn how the 1st Ave Streetcar is working to quietly integrate into the neighborhood. Observe the challenges of ensuring a fully accessible community when nearly all of its sidewalks are hollow.

Jamie Lee, IDEA Space Program Manager, Seattle Chinatown International District Preservation and Development Authority / Carl Leighty, Public Realm Coordinator, Alliance for Pioneer Square / Maiko Winkler-Chin, Executive Director, Seattle Chinatown International District Preservation and Development Authority

# Wednesday 202 Workshops

1:30 PM

ALL 202 WORKSHOPS AND TOURS REQUIRE AN ADDITIONAL FEE. PLEASE VISIT THE REGISTRATION DESK IN THE GRAND LOBBY OF THE BENAROYA HALL TO REGISTER

## 202 WORKSHOP: A PRACTITIONER'S GUIDE TO STREET DESIGN

1:30-4:30 PM, Arnold Board Room / SAM

How can you adopt (or create) a street design manual for your community that helps create beautiful, safe, and delightful streets? And is a better manual really the answer to your city's street design problems? This hands-on session takes participants out into the field to explore these questions and become familiar with streets that could benefit from a redesign.

Participants learn directly from experts of innovative street design manuals, specifically the forthcoming Practitioner's Guide: A CSS Approach to Multimodal Thoroughfare Design. These manuals serve as the best tools for creating more pedestrian-friendly streets. Participants will apply their new knowledge to streets in Seattle from the site visit.

Andrew Bauer, Senior Planner, City of Redmond / Dongho Chang, City Traffic Engineer, City of Seattle / Paul Moore, PE, Principal, Nelson\Nygaard

## 202 WORKSHOP: ART ROOM: ARCHITECTURAL DESIGN TECHNIQUES OF CLASSIC EUROPEAN URBANISM

1:30-4:30 PM, Simons Board Room / SAM

Have you strolled the historic centers of cities in Europe and marveled at the exquisite character of the built environment? Have you wondered how building after building was designed to such a consistently high degree of excellence and harmony—from the large urban forms, down to the small details?

Would you like to know how to employ these design techniques today? Prepare to roll up your sleeves! Together during this guided, highly interactive hands-on workshop,

we will explore the specific physical design techniques employed by architects to achieve these stunning results.

As a group, we will learn to design and draw building façades that work together to form a harmonious urban space. Participants will each choose a building site in a small urban ensemble. We will then proceed to learn and test key principles by designing and drawing our building's façades. We will methodically progress step-by-step: from the design of overall building massing, to the articulation of building elements, and then to the choice and arrangement of architectural details. Each participant will have the opportunity to draw a complete building façade.

Then as a group we will combine our completed building façades side-by-side to observe the important ways they all work together to form a single unified public space!

James Dougherty, Director of Design, Dover, Kohl & Partners Planning

## 202 WORKSHOP: UTILIZING AFFORDABLE HOUSING TO CATALYZE TOD

1:30-4:30 PM, Seattle Central Library / 4th Floor, Room 1

In the world of Transit Oriented Development, "build it and they will come," is not always an accurate prediction of the future. Quite often the ambitious plans for redevelopment at new or expected transit stations drawn up by cities and towns fail to gain traction in the marketplace even when it is proposed as part of a corridor improvement program into which the municipality has committed funding.

Interestingly, the construction of affordable housing can sometimes be the instrument to catalyze the municipally proposed redevelopment at the same time as it provides homes for those unable to afford market rate units. If the affordable housing is designed with the architectural and urban quality imagined for the whole of the redevelopment, i.e., if it is designed help create 'place' by establishing walkable streets, and livable public place, then it can provide the catalyst for market rate development to occur later. Moreover, unlike the Not in My Back Yard objections that often greets proposers of affordable housing in established neighborhoods, there are usually few neighbors to object in such redevelopment areas, and therefore entitlement can be swifter.

This workshop will examine examples of completed and ongoing efforts across the U.S. Participants will apply lessons from the workshop in a classroom exercise.

Murphy V. Antoine, Jr, AIA, AICP, Architect/Urban Designer, Torti Gallas and Partners / Neal Payton, AIA, Principal, Torti Gallas and Partners, Inc / Stan Wall, Partner, HR&A Advisors

## Evening

### PLENARY / CNU & ULI / FIRESIDE CHAT WITH FORMER VICE PRESIDENT JOE BIDEN

5-6 PM, Washington State Convention Center

A long-time supporter of sustainable development, efficient rail transportation, and strong local economies, former Vice President Joe Biden will reflect on the future of communities during a fireside chat in a joint ULI/CNU plenary.

Joe Biden, former Vice President of the United States and Benjamin Franklin Presidential Practice Professor, University of Pennsylvania

### CHAPTER MEET-UPS

6:30-9 PM

Looking to connect with other CNU members and like-minded professionals locally? Take the time to mingle over drinks at one of several Chapter Meet-Ups across Seattle's Capitol Hill neighborhood.

CNU Florida & CNU Atlanta  
Elysian Capitol Hill Brewery / 1211 E. Pike St

CNU New England & CNU DC  
Sam's Tavern / 1024 E. Pike St

CNU Cascadia  
Rhein Haus Seattle / 912 12th Ave

CNU New York  
Stout / 1530 11th Ave

CNU Central Texas  
Optimism Brewing Company / 1158 Broadway

CNU Michigan, CNU Illinois, CNU Wisconsin,  
CNU Midwest, CNU Ontario  
McMenamins Six Arms / 300 E. Pike St

### BEYOND THE CHARRETTE: CONNECTING TO COMMUNITIES & EMPOWERING EVERYDAY CITIZENS

1:30-2:45 PM, Nordstrom Lecture Hall / SAM

While the theoretical concept of the charrette is one that most New Urbanist practitioners embrace, the devil is inevitably in the details. Too often, community engagement in design and (re)development processes is relegated to uninspired public presentations or meaningless community events.

This session brings together innovative community engagement practitioners to discuss connecting design with the communities it impacts, in ways and at times well beyond the charrette. Panelists will present work from their own community engagement practices, including the incorporation of Tactical Urbanism within the charrette process and implementation of planning in real time, the role of Social Magic progress methodology in leveraging community organizing and grass roots initiatives in transforming communities, and the incorporation of Civic Dinners and cross-disciplinary dialogue into community engagement. Following presentations, panelists will join in a discussion of the complex obstacles and opportunities that come with meaningful community collaboration, to conclude this session.

Mallory Baches, Urban Designer, The Civic Hub / Anthony T. Garcia, Principal, The Street Plans Collaborative / Jenn Graham, CEO, Founder, Aha! Strategy, Civic Dinners / Gia Hamilton, Founder, Director, Gris Gris Lab, Joan Mitchell Center

### BREAK

2:45-3:15 PM

Grab coffee, tea, and other refreshments in the Grand Lobby of the Benaroya or Lobby of the Seattle Art Museum.

### AUTONOMOUS VEHICLES & THE GOOD CITY

3:15-4:30 PM, Recital Hall / Benaroya

Autonomous vehicles (AVs) have the potential to be either a boon or a burden to our cities. Walkable City author Jeff Speck lays out rules intended to ease the pain and increase the pleasure of the eventual AV proliferation.

This session is open to the public.

Jeff B. Speck, CNU-A, AICP, LEED AP, Honorary ASLA, Principal, Speck & Associates LLC / Ellen Dunham-Jones, Professor of Architecture and Urban Design, Georgia Institute of Technology



The bridge that connects Seattle and Medina across Lake Washington is the world's longest floating bridge.

# Thursday 5/4

## REGISTRATION

7 AM-7 PM, Grand Lobby / Benaroya Hall

Pick up your badge, bag, and printed program at the Registration Desk and interact with exhibitors in the Grand Lobby of the Benaroya Hall.

## Morning

### RUNNING WITH URBANISTS

7-8 AM, Meet outside of Benaroya Hall, 3rd Ave

Bring your running shoes and join your fellow urbanists for a no-drop morning run around Central Seattle. Don't worry: you'll get back in plenty of time for morning sessions. We will form a couple of pace groups if desired, including a slower one and a moderately-paced one, so runners of all speeds and experience are welcome.

John Simmerman, Co-founder, President & CEO, Active Towns

### BREAKFAST

8-9 AM, Grand Lobby / Benaroya Hall

Enjoy a continental breakfast in the stunning Grand Lobby of Benaroya Hall.

### TOUR: PIKE/PINE RETAIL DISTRICT

8-10 AM, Tours Desk / Benaroya Lobby

Framed by historic buildings and a revitalizing waterfront, Downtown Seattle is one of the America's most successful urban retail shopping districts. This fast-paced tour will explore the Sixth Ave-Pike Street corridor, highlighting its successes in planning, design, and merchandising. Participants will learn about the latest trends in storefront design, visual merchandising, signage, lighting, parking, streetscaping, and parking management. Expert tour leaders will explain easy-to-use strategies with a focus on applications for growing downtowns and new town centers.

Robert Gibbs, President, Gibbs Planning Group / Terry Shook, FAIA, Founding Partner and Principal, Shook Kelley, Inc

### TOUR: BELLEVUE'S GRAND CONNECTION

8 AM-12 PM, Tours Desk / Benaroya Lobby

Located across Lake Washington from Seattle, the city of Bellevue is undergoing a transformation from a bedroom suburb to a walkable retail, business, and employment nexus. In this tour, participants will explore the Grand Connection, a pedestrian-oriented corridor linking the Lake Washington waterfront to Old Bellevue, the Downtown Park, retail areas, transit stations, and City Hall. From Bellevue, attendees will walk along the planned Grand Connection route with an option to eat lunch locally in Bellevue near City Hall.

Bradley Calvert, Community Development Program Manager, City of Bellevue / Philip Harris, AICP, Senior Planner

### TOUR: BIG TIME REVITALIZATION OF A SMALL CITY DOWNTOWN

8 AM-1 PM, Tours Desk / Benaroya Lobby

How does a suburban city embark on one of the most successful and ambitious suburban retrofits in the nation? In 2006, the City of Bothell, WA began a major downtown revitalization project to capitalize and expand on its existing downtown assets with new public and private investment well in excess of \$650 million.

Participants will spend the morning seeing Bothell's amazing ongoing transformation with several of the key planners who have led the effort. Tour a brand new multiway boulevard lined with mixed-use housing, walk through the recently opened renovation of a historic school into an expansive McMenamins hotel and brewpub campus, observe the realignment of a state highway that freed up acres of downtown land for new development, stroll along a newly daylight creek, see and hear about the creation of a new library and city hall and additional public and private development projects underway, and learn about the successful community-driven planning efforts undertaken and what the future has in store for the City of Bothell going forward.

Dave Boyd, Senior Planner, City of Bothell / Steve Morikawa, Capital Division Manager, City of Bothell / Gregory Tung, Principal, Freedman Tung & Sasaki

# Urbanism for the Next 25 Years: New Techniques for New Challenges

9 AM-12 PM  
RECITAL HALL /  
BENAROYA

## 9:25 AM

### DHIRU THADANI / SUCCESSIONAL URBANISM

Successional Urbanism recognizes that places that have withstood the test of time, which are upheld as precedents to emulate, where built incrementally, financed prudently, reflected the cultural norms, and were lightly administered. They started small in the inaugural phase, the germinating idea was tested and improved, and the climax condition that we experience today may have taken many years or decades to achieve.

In recent times developers and designers have strived to compress the timeline and sought to achieve the climax condition, bypassing the inaugural condition and successional stages of urban molting. The results in most cases have been unsatisfactory and financially precarious. Successional Urbanism endeavors to develop protocols for every level—design, financial, administrative, and cultural—that will allow incremental growth to occur again.

As we mark twenty-five consecutive annual congresses, CNU can celebrate a host of achievements, from detailed technical changes in many of the disciplines that contribute to our built environment, to having fundamentally changed the conversation about good development and redevelopment. But, when we look at the reality of our built environment and ask, "Are we there yet?" the answer is clearly, "Not yet."

The principles of the New Urbanism establish a physical framework that is inherently flexible and accommodating of change. However, these principles will likely be put to severe tests over the next 25 years with the rapid and dramatic changes in economics, demographics and particularly technology. Will the principles still stand? What new barriers and challenges confront the quest for rational, inclusive, human-scale neighborhoods? Experts from a range of disciplines—some of which did not exist 25 years ago—will present a glimpse of the future.

## 9 AM

### TODD ZIMMERMAN / DEMOGRAPHIC CHALLENGES TO URBANISM

The adult residents of walkable, mixed-use neighborhoods over the next 25 years have already been born. By 2042, the oldest Boomers will be 96; Gen Xers, 77; Millennials 65; Gen Zed, 45; and the Alpha Generation, 25. What opportunities and challenges to urbanism are presented by the current make-up of American households, and what, if anything, can we forecast about long-term household behaviors affecting urban settlement patterns.



The iconic Pike Place Market started because of overpriced onions.

9:45 AM

**25 JUNE WILLIAMSON / THE FUTURE OF SUBURBAN RETROFIT**

June Williamson, co-author of *Retrofitting Suburbia*, will share her insights on how new technologies, demographics and climates will impact Suburban Retrofit projects over the next 25 years. Will emerging disruptions to private retailers and public agencies lead to new approaches to finance, zoning and economic development? Which property types will fail next and will they be more suited for reinhabitation, redevelopment or greening? How might all of these changes accelerate the quantity and quality of suburban retrofit.

**BREAK**

10:45 AM

**ELIZABETH CHRISTOFORETTI / BIG DATA FOR SMALL PLACES**

There are reams of urban data in the world, but the realms of urban design and development aren't doing the best job taking advantage of this data to make places better. Elizabeth helped found Supernormal to change this. Supernormal bridges the disciplines of architecture, urban design, and planning with the goal of bringing increased sensitivity and systematization to urban development through the use of improved quantitative methods. New Urbanists are well-suited to learn from this approach. Christoforetti will explain how this new approach can improve the design, development and management of cities.

11:05 AM

**BOAZ ASHKENAZY / VISUALIZING PLACE WITH VR, AR, & MIXED-REALITY**

Virtual, Augmented, and Mixed-Reality is at the forefront of innovation in the architecture and real estate development realm. West Coast cities in the Bay Area and Seattle are home to a number of innovative minds employing virtual and augmented reality platforms like the Oculus Rift and HoloLens to the design of physical spaces. Boaz Ashkenazy, co-founder of Studio 216, outlines ways in which real estate professionals can experience unbuilt environment using virtual reality, architectural visualization, and mobile applications.

11:25 AM

**LISA PICARD / HOW TECH WILL SHAPE THE FUTURE CITY**

Lisa Picard, real estate developer and former VP at Skanska, goes several steps further, positing ways in which new technologies are fundamentally shaping and reshaping the ways we design, build, and interact with cities. Lisa lays out a vision of the future city, where innovation in tech informs the built environment in ways that are only starting to come to light.

**LUNCH**



Seattle is ranked the most literate city in the country, with the highest percentage of residents with a college degree or higher.

**MAJESTIC CANOPIES & THE HIDDEN LIFE OF STREET TREES**

9-10:15 AM, Arnold Board Room / SAM

Some of the most beautiful streets in the world are shaped by magnificent allées, from Parisian boulevards to American Main Streets. Yet New Urbanists know well how hard it can be to build streets like those today. Landscape architects, architects, arborists, and engineers frequently conspire to stop them. In this session, we will look at how to counter the counter-arguments and how to select and plant healthy street trees that will make streets as beautiful as the historic examples we all admire. That includes looking at some secret principles of historic streets that few remember today.

Ann B. Daigle, Urban Regeneration - Design & Strategy, The CityBuilding Exchange / Douglas Duany, Professor of the Practice, University of Notre Dame / John Massengale, Principal, Massengale & Co LLC / Prisca Weems, Principal, FutureProof

**THE NEXT BABY BOOM: THE FUTURE OF FAMILIES IN CITIES**

9-10:15 AM, Nordstrom Lecture Hall / SAM

The convergence of the childless households of the nation's two largest generations provided the impetus for the revival of Downtowns and in-town neighborhoods at every scale following the turn of the century. The inevitable family households that Millennials create will challenge us to show the viability of urban neighborhoods for families; in fact, it is an opportunity to demonstrate the superiority of walkable environments as places to raise happy and self-assured children. However, the collective acknowledgment of this demand may not come in time to develop sufficiently affordable solutions unless efforts are made today to address such issues.

Jennifer Griffin, Founding Principal, J Griffin Design, LLC / Steve Gillespie, Parents for a Better Downtown Seattle / Emily Hooper George, Chair, Parents for a Better Downtown Seattle / Priya Madrecki, Senior Manager of Strategic Communications, KaBOOM!

**ART ROOM: CHARRETTE DRAWING TECHNIQUES**

9-10:15 AM, Simons Board Room / SAM

The ability to quickly communicate ideas visually is a key skill for participating in the fast-paced charrette design process. Learn charrette drawing techniques used by leading New Urbanist practitioners to quickly and collaboratively explore and express design ideas.

David Csont, Architectural Illustrator, Urban Design Associates / Steve A. Mouzon, AIA, LEED, Principal, The New Urban Guild / Joe Skibba, Illustrator, Urban Design Associates / Jennifer Garcia, Town Planner, Dover Kohl & Partners / Arti Harchekar, Associate, Opticos Design, Inc / Joe Skibba, Illustrator, Urban Design Associates

**25 MISSING MIDDLE HOUSING V2: HELPING CITIES ADDRESS 21ST CENTURY CHALLENGES**

9-10:15 AM, Plestcheeff Auditorium / SAM

As Missing Middle Housing is catching on around the world, the concept and its application is evolving and becoming more sophisticated to meet the housing needs of today's cities and regions. The panel will explore Missing Middle application in state-of-the-art density bonus and affordability housing programs, present strategies for identifying where these types should be enabled, and look at applications from AARP's Livable Communities to New South Wales, Australia. We'll also discuss the opportunities and challenges for large developers looking to take the Missing Middle to scale, building these "new" products to meet the growing demand for housing choice and walkable urban living.

Dennis Allen, Managing Director, Holland Partner Group / Ian Carlton, Project Director, ECONorthwest / Daniel Parolek, AIA, Principal, Opticos Design, Inc

**OUR FAILURES: LESSONS FROM 25 YEARS OF NEW URBANISM**

9-10:15 AM, Founders Room / Benaroya

The New Urbanism movement has had a lasting impression on urban planning and design, shifting the conversation from building sprawl to building place. As practitioners, new urbanists constantly test ideas, responding to local contexts, sometimes finding out that what works in St. Petersburg doesn't play in Peoria.

Collectively, the New Urbanism movement has more than three decades of wisdom collected from designing and implementing the Charter around the world. This session asks long-time new urbanist practitioners to ponder into their decades of experience and asks them to speak to their failures and tragic missteps, and how these have informed their practice.

**BREAK**

10:15-10:45 AM

Grab coffee, tea, and other refreshments in the Grand Lobby of the Benaroya or Lobby of the Seattle Art Museum.

## TOUR: ARCHITECTURE 101: WINDOWS ON SEATTLE'S STYLE

10 AM-12 PM, Tours Desk / Benaroya Lobby

Is God really in the details? Find out as we focus on design elements of buildings ranging from English Gothic to Brutalism and from Beaux Arts to Modernism. Construction techniques, trends in aesthetics and functional considerations of windows and views contributed to these structures. You will explore how the use and incorporation of glass reflects changing societal trends. Featured stops include the Financial Center, the Plymouth Congregational Church and the Fairmont Olympic Hotel.

This tour is done in partnership with the Seattle Architecture Foundation.

## RIP LOS: PROTECTING THE ENVIRONMENT TRUMPS PROTECTING AUTO TRAVEL

10:45 AM-12 PM, Nordstrom Lecture Hall / SAM

This session would highlight how changes in transportation performance measures such as the switch from LOS to VMT in California due to Senate Bill (SB) 743 are influencing urban design and environmental outcomes.

Chris Ganson, Senior Planner, California Governor's Office of Planning and Research / Ronald T. Milam, Director of Evolving the Status Quo, Fehr & Peers / Chris Yake, Senior Transportation Planner, Policy & Planning, City of Seattle

## DOES YOUR ZONING FULLY IMPLEMENT YOUR POLICY DIRECTION?

10:45 AM-12 PM, Arnold Board Room / SAM

As an implementation tool, form-based zoning responds directly to the community's policy direction to express different priorities by geographic location. Learn how to use the various components within one code to regulate and generate the community vision across very different areas with different expectations. For example, a corridor with high expectations will tend to use most or all of the code's components and have more detailed regulations while a corridor with modest expectations will tend to use fewer of those components and have less detailed regulations. Join an interactive discussion where leading practitioners discuss ways to respond to community needs and priorities for the next 25 years.

Tony Perez, Director of Form-Based Coding, Opticos Design / Lisa Wise, President, Lisa Wise Consulting, Inc. / Marcy McInelly, AIA, President, Urbsworks, Inc

## ART ROOM: EVOCATIVE COLOR & LIGHT

10:45 AM-12 PM, Simons Board Room / SAM

Emotion sells! Learn how to use dramatic color and lighting schemes to magnify the emotional impact of your design illustrations. We will focus on how to emulate the powerful ambiance of urban environments seen at various times of the day and night.

David Csont, Architectural Illustrator, Urban Design Associates / Joe Skibba, Illustrator, Urban Design Associates / James Dougherty, Director of Design, Dover, Kohl & Partners Planning

## THE NEXT 25 YEARS ROUNDTABLE

10:45 AM - 12 PM / Founders Room, Benaroya

The CNU and its members have achieved a remarkable number of accomplishments over the past 25 years— ideas, projects, interventions, and more. But there's more work to do. This is a special roundtable discussion is dedicated to looking at the next 25 years of challenges facing the CNU. Each panelist will share his or her view of the top three (or fewer) future challenges facing the movement over the next 25 years. After these ideas are laid out, the remaining time will be spent in robust conversation responding to and discussing the ideas. CNU Founder Stefanos Polyzoides will moderate.

Ellen Dunham-Jones, Professor of Architecture and Urban Design, Georgia Institute of Technology / Eliza Harris Juliano, Harris Juliano, Director of Urbanism, Canin Associates / Jennifer Hurley, AICP, NJPP, CNU-A, President & CEO, Hurley-Franks & Associates / Kevin Klinkenberg, AIA, Executive Director, Savannah Development and Renewal Authority / Thomas Pacello, President, Memphis Medical District Collaborative / Stefanos Polyzoides, Principal, Moule & Polyzoides Architects & Urbanists / Erika Ragsdale, Planning Coordinator, City of San Antonio / Scot Spencer, Associate Director, Advocacy & Influence, Annie E. Casey Foundation

## ADDRESSING THE IMMIGRATION & HOMELESS CRISES: SETTLEMENT, RESETTLEMENT & INTEGRATION

10:45 AM-12:30 PM, Plestcheeff Auditorium / SAM

The European refugee migration crisis could well be the biggest settlement challenge of our time and one only likely to get worse with climate change. At the same time, in the U.S. homeless populations have grown considerably over the years. Both populations experience unique needs, which properly addressed, can allow them to integrate successfully into societies.

Moderated by CNU founder Elizabeth Moule, this session will examine both crises, as there are lessons linking both challenges. What are the ways in which refugees can be meaningfully served immediately? How can new migrants interweave into already settled places over the long run and how do we make sustainable communities that can serve multiple populations that will inevitably shift over the decades? What lessons can be learned from the history of neighborhood settlements such as Testaccio in Rome? What opportunities exist for established countries like Italy or Greece? How, along with addressing the mental and physical health issues of the homeless, can cities provide emergency, transitional and affordable housing in conjunction with other services to get people off the streets and into homes?

Michael Lykoudis, Francis and Kathleen Rooney Dean of the School of Architecture, University of Notre Dame / Ettore Maria Mazzola, Associate Professor of the Practice, Rome, University of Notre Dame / Elizabeth Moule, Principal, Moule & Polyzoides Architects & Urbanists / Daniel Solomon, Principal, Mithun | Solomon

## TOUR: WALKABLE SOUTH LAKE UNION - A NEIGHBORHOOD TRANSFORMED

11 AM-1 PM, Tours Desk / Benaroya Lobby

Participants in this tour will explore South Lake Union, a once-sleepy commercial and industrial district that has undergone a profound transformation into a diverse, walkable hub for tech giants like Amazon and the biotech-focused Allen Institutes. Discussion items will include strategies for creating successful mixed use neighborhoods, attracting Millennials and highly-educated workers, integrating a new streetcar, using the right-of-way for more than transportation, achieving LEED-ND certification, and creating a new urban boulevard.

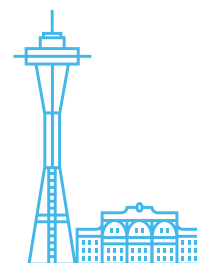
Lyle Bicknell, Principal Urban Designer, City of Seattle

## Afternoon

### LUNCH

12-2:30 PM

Lunch on your own. Stroll through Pike Place Market, visit the food trucks at Westlake Park, or dine in nearby Pioneer Square. Or if you're in a hurry, grab lunch in the Benaroya's cafe area.



The Space Needle actually sways one inch for every 10 mph of wind. Thankfully its concrete foundation goes 30 feet underground.

**IF YOU'RE PARTICIPATING IN A MEMBER-LED SESSION, REMEMBER THESE START PROMPTLY AT 1 PM. KEEP IN MIND THAT YOU'RE NOT ALLOWED TO BRING FOOD INTO THE MEETING ROOMS.**

## MEMBER-LED: WORKING FOR THE COMMON GOOD: FINDING THE INTERSECTION OF FAITH, COMMUNITY, & DESIGN + CHRISTIAN CAUCUS

1-2 PM, Arnold Board Room / SAM

The session will discuss the intersection of faith, faith communities and design professionals in shaping the built environment for the Common Good. Set within a historical context, the presenters will illustrate how faith-motivated designers, churches and other faith communities can positively impact the built environment by seeking the "shalom" of the neighborhood. The illustrations will include historic examples and a case study of the Third Church Charrette. Hosted by the CNU Members Christian Caucus.

Christopher Miller, Professor, Judson University / Andrew Moore, Principal & Director of the Urban Architecture Studio, Glavé & Holmes Architecture / Michael Watkins, AIA, AICP, NCARB, LEED AP, CNU-A, Architect, Michael Watkins Architect, LLC

## MEMBER-LED: URBANFOOTPRINT: SOFTWARE FOR SUSTAINABLE URBAN DESIGN

1-2 PM, Plestcheeff Auditorium / SAM

The future of our cities is the future of our society. UrbanFootprint informs their growth with information, design tools, and an expanding range of analysis. It provides a comprehensive data base, state-of-the-art urban design options, and facile scenario tools for projects, cities and regions. It shows real impacts in real time, integrating environmental, social, and economic analysis into the decision making and approval process.

UrbanFootprint can be used at many scales for many users. It supports projects at telescoping scales from infill sites and local neighborhood strategies to corridor, district, city and regional policy and master plans. Learn how you can apply this tool from its creators.

Peter Calthorpe, Principal, Calthorpe Associates / Joe DiStefano, Principal & Co-founder, Calthorpe Analytics

**MEMBER-LED: ARCHITECTS OF COMMUNITY / 25 YEAR OF MAKING A NEW URBAN DESIGN PRACTICE**

1-2PM, Nordstrom Lecture Hall / SAM

As they celebrate their recently published book, “Architects of Community”, this session will discuss how the practice behind the work of Torti Gallas + Partners operates. The people, evolution, methodologies, organization, mentoring practices, design philosophy, discourses, research, real estate, social justice, awards, competitions, business model, and the aspirations of Torti Gallas + Partners will be shared. Bring your questions and find out how the practice behind their projects works!

John Torti, President, Torti Gallas & Partners, Inc.

**MEMBER-LED: URBAN LANDSCAPE COUNCIL**

1-2 PM, Simons Board Room / SAM

The fourth annual Urban Landscape Council (ULC) will be moderated by Stephanie Bothwell, ASLA, Stephanie Bothwell Urban and Landscape Design and Tom Comitta, ASLA, Thomas Comitta Associates. The purpose of the ULC is to advocate for great urban landscape design, education and policy. This year, we are joined by Stephen Poulakos, Seabrook Director of Town Planning, who will discuss the role of landscape design and planning in new urbanist communities.

This follows on his all day Seabrook tour that occurred on Tuesday. Preview his projects at seabrookwa.com, rosemarybeach.com, and draperlake.com. Along with other topics, we will discuss the CNU Climate Change Initiative in anticipation of Saturday’s session.

Stephanie Bothwell, ASLA, Principal, Stephanie Bothwell Urban & Landscape Design / Stephen G. Poulakos, Director of Town Development, Seabrook Land Company / Tom Comitta, ASLA, Thomas Comitta Associates

**LESSONS FROM LEGACY PROJECTS**

1-2:15 PM, Founders Room / Benaroya

Each year, CNU partners with our Congress host region to empower local leaders, advocates, and residents to implement New Urbanist principles through Legacy Projects. These projects culminate in three-day on-site workshops that explore opportunities, identify crucial roadblocks, engage local residents in visioning, and generate top-of-the-line design and placemaking strategies for pressing local challenges. While each communities’ dilemmas are context-sensitive, the design teams’ proposed solutions have wide applicability.

This year, practitioners helped identify the essential character elements in Seattle’s Central Area, in order to assist the community-led design guidelines development. In suburban Tukwila, one of the most diverse zip codes in the United State, practitioners reimagined International Boulevard as a vibrant, walkable main street corridor. In both places, community leaders are determined to turn drawings into real development. Learn from these local examples as community leaders share their most pressing problems and new urban practitioners present strategies and solutions.

Arti Harchekar, Associate, Opticos Design, Inc / Hazel Borys, Managing Principal, PlaceMakers



Seattle was the first U.S. city to outfit its police force with bicycles in 1987.

**Afternoon**

**TOUR: BELRED / OVERLAKE TOD**

1-5 PM, Tours Desk / Benaroya Lobby

Participants on this tour will visit new transit-oriented communities in Bellevue and Redmond, two fast-changing suburbs with major plans for walkability, development, and high-tech economic growth. The tour includes the Spring District, a 36-acre mixed-use neighborhood with multi-use, office, and residential space adjacent to a light rail station, including the Global Innovation Exchange, a joint venture of the University of Washington, China’s Tsinghua University, and Microsoft, the future headquarters of REI. It ends at the future Redmond Technology Center station site adjacent to Microsoft’s main campus.

Andrew Bauer, Senior Planner, City of Redmond / Emil King, Strategic Planning Manager, City of Bellevue / John Marchione, Mayor, City of Redmond / Philip Harris, AICP, Senior Planner

**TOUR: SEATTLE’S FIRST 21ST CENTURY COMMUNITY - HIGH POINT**

2-6 PM, Tours Desk / Benaroya Lobby

In Seattle’s innovative green urban district of High Point, this tour will showcase how partnerships and great design came together to create a sustainable mixed-income community with 1,600 homes and 3,500 residents—and provide an unvarnished look at the unique challenges that surface when piloting new green technologies and strategies. Led by High Point’s developer and civil engineer, participants will discuss topics include the area’s 120-acre Natural Drainage System, green affordable housing, public health advances that enriched the site, partnerships with City agencies and local groups, and, crucially, the community outreach that included all High Point neighbors. A diverse panel of High Point residents and service providers will share their perspective on this mixed-income social experiment.

Tom Phillips, Developer/Project Manager, High Point / Peg Staeheli, Principal, MIG|SvR

**TOUR: DOCUMENTING SEATTLE’S MISSING MIDDLE HOUSING**

2-6 PM, Tours Desk / Benaroya Lobby

In Seattle, a growing awareness of the lack of Missing Middle Housing types like duplexes, fourplexes, bungalow courts, and live-work units has highlighted the nationwide mismatch between existing housing stock, changing demographics, and demand for walkability. In this tour, participants will explore and document Seattle’s Missing Middle Housing while discussing challenging affordability issues. The walk will present a chance to learn how to support these types through smart planning and zoning, and to understand barriers affecting the construction of new Missing Middle Housing.

Daniel Parolek, AIA, Principal, Opticos Design, Inc / Linda Pruitt, President, The Cottage Company / Eli Spevak, Developer and Principal, Orange Splot LLC

**25 A FUTURE WITHOUT URBAN FREEWAYS**

2:30-3:45 PM, Plestcheeff Auditorium / SAM

For four decades New Urbanists have targeted select Freeways Without Futures with demolition and boulevard conversion. Now a technological sea change of vehicle-sharing, remote work, and virtual socialization among younger generations has moved us beyond the era of

Peak Highway and will provide us with the opportunity to reconsider the presence of all highways in urban areas.

Join our panelists to widen your perspective from a focus on the boulevard to the investigation of effective political coalitions, the design of livable infrastructure that a post-car, shared mobility age requires, and the policy frameworks we will need to leverage the highways of today into the foundational infrastructure of tomorrow.

Andrew Faulker, Urban Designer, Van Meter Williams Pollack LLP / Patrick Kennedy, Founding Partner, Space Between Design Studio / Ian Lockwood, Livable Transportation Engineer, Toole Design Group / Chris Sensenig, Urban Designer, Van Meter Williams Pollack LLP

# Urbanism for the Next 25 Years: New Techniques for New Challenges

2:30–5:30 PM  
RECITAL HALL /  
BENAROYA

As we mark twenty-five consecutive annual congresses, CNU can celebrate a host of achievements, from detailed technical changes in many of the disciplines that contribute to our built environment, to having fundamentally changed the conversation about good development and redevelopment. But, when we look at the reality of our built environment and ask, “Are we there yet?” the answer is clearly, “Not yet.”

The principles of the New Urbanism establish a physical framework that is inherently flexible and accommodating of change. However, these principles will likely be put to severe tests over the next 25 years with the rapid and dramatic changes in economics, demographics and particularly technology. Will the principles still stand? What new barriers and challenges confront the quest for rational, inclusive, human-scale neighborhoods? Experts from a range of disciplines—some of which did not exist 25 years ago—will present a glimpse of the future.

## 2:30 PM

### **25** KAREN MINKEL / MAKING THE RIPPLES GO FARTHER

Philanthropy can help jumpstart the transformation of communities, especially in parts of the country that could benefit most from public-private collaboration. In Northwest Arkansas, a region of 32 municipalities, the Walton Family Foundation has played a catalytic role in forging regional partnerships that are challenging assumptions about trail networks and human transit. Learn how a diverse coalition of local government, businesses, and a foundation are helping a region get out in front of rapid growth and into vibrant future.

## 2:45 PM

### JARRETT WALKER / PLANNING TRANSIT: CAN WE LIVE WITHOUT PREDICTIONS?

Transportation planning seems, at times, to be all about prediction. Consultants vie to do the best models. Journalists do gotcha stories about whether predictions were right. Competing predictions confuse local elected officials and activists. Jarrett Walker explores how much prediction we really need, and how our longing to know the future may interfere with our ability to have clear conversations. While the focus here is on transit, the insights may be useful to people in all aspects of planning.



Seattle was the first city in the U.S. to play a Beatles song on the radio.

## 3:10 PM

### JONATHAN F.P. ROSE / OUR COLLECTIVE FUTURE

Today’s cities are technical marvels, reflecting civilization’s enormous scientific strides. Human creativity has produced unimagined power and prosperity, although that prosperity has come at a price: it is poorly distributed, and it is fostering the next great extinction. By the end of the 21st century, 80% of the world’s human population will live in cities. If we are to address these problems, cities must be part of the solution. We must knit these threads—our technical, cognitive, and social potential and the generative power of nature—back together, toward a higher purpose for cities. And we can only achieve this if we recognize that we are all in it together. The issues of climate change and income inequality will touch every one of us in different ways, but we can only solve them as a civilization focused on collective goals. And the best place to start is with our cities.

## BREAK

## 4:15 PM

### LARRY FRANK / PREDICTING THE HEALTH IMPACT OF BUILT, NATURAL & SOCIAL ENVIRONMENTS

There has been an avalanche of data and information confirming the strong connection between public health and the built environment, yet the use of that information by practitioners advancing the principles of New Urbanism has been episodic at best. In his talk, Frank will explore how this can and will change in the coming years.

## 4:40 PM

### JEFF RISOM / DESIGN FOR INCLUSIVE PUBLIC LIFE

As urbanists, we understand that urban design can either perpetuate inequality or promote social justice. But design of public space is only part of the equation. Creating a thriving public life that invites people from different places and different walks of life can provide exposure to people who are different—socially, ethnically, politically. Can exposure and contact with people who are different from us help address major urban challenges—inequality, public health, and access to opportunity? Can these micro-moments, small glimpses into the lives of people taking place in streets and public spaces, become an equalizing force in our polarized society? Jeff Risom, Partner and Managing Director of Gehl US, lays out his vision for the future of inclusive public life.

## STRESS TESTING MUNICIPAL CODES FOR MISSING MIDDLE BUILDINGS

2:30-3:45 PM, Founders Room / Benaroya

The term stress test is most often associated with going to your doctor’s office to take a jog on a treadmill or as a check of financial health inside a bank. In search of properties that have the proper zoning to allow Missing Middle Buildings and other incremental development approaches, a new type of stress test has emerged. The purpose is to examine the readiness of a municipality’s existing building and zoning codes to allow typical 1-3 story buildings on small lots. It also uses financial pro formas to properly calibrate expectations for the current and near future development potential for different scales of buildings from snow cone stands to mixed-use podium buildings. This can be particularly useful when transit, tax increment financing or other major changes that are counting on new development are in play.

This session will examine stress test results in several cities and discuss the actionable steps that can be taken to make text amendments and basic workarounds to legalize as much as possible with the lightest political and technical lift.

John Anderson, Principal, Anderson|Kim Architecture + Urban Design / Jim Kumon, Executive Director, Incremental Development Alliance / Kenny Asher, Community Development Director, City of Tigard

## ART ROOM: BRAND DESIGN

2:30-3:45 PM, Simons Board Room / SAM

Well-designed branding gives your real estate project a strong identity in the minds of your audience. Learn steps to brainstorm your brand and then to how to communicate it with a powerful graphic brand message.

Michael Courtney, Principal, Creative Director, Michael Courtney Design

## OI: DIVERSITY, AFFORDABILITY, & SOCIAL EQUITY

2:30-3:45 PM, Arnold Board Room / Sam

On affordability, Mark Santrach will talk about alternative home ownership strategies. Scott Polikov will talk about how suburbs can become the new “melting pot” for housing reform in terms of creating opportunities to “move up” without having to move out of the neighborhood, with the possibility of creating great neighborhoods within sprawl. James Bruce and Evan Corey will make a joint presentation on how sustainable e-commerce solutions stand to deliver more walkable communities.

On equity, Nidhi Gulati will talk about how urban greenways linked together can create the innovative new whole of “Networks” as a way of attaining equity, and connecting people to places and each other, forming the backbone of a historic urban fabric. Jay Crossley will conduct an interactive exercise to demonstrate a Quick Equity Assessment program.

On diversity, Andrew Georgiadis will talk about how we can balance streamlined and predictable approvals after the charrette takes place and the Form-based Code has been created with with the needs and desires of the people who live there. Robert Orr will talk about why and how to make small and locally capitalized development viable again, with the goal to restore the ability of small, local developers known by their communities, but limited in their resources, to produce great places.

Jay Crossley, Houston Tomorrow / Kristal Fiser, Director of State Government Affairs, UPS / Andrew Georgiadis, President, Georgiadis Urban Design / Nidhi Gulati, Program Manager | Emerald Network, LivableStreets Alliance / Robert Orr, FAIA, LEED, Principal, 2-term President, Robert Orr & Associates LLC, CNU New England / Scott Polikov, President, Gateway Planning Group / Mark Santrach, Architect, Robert A.M. Stern Architects / Emily Talen, Ph.D., FAICP, Professor, University of Chicago

## INTERNATIONAL NEXT CITY FORUM

2:30-5:30 PM, Nordstrom Lecture Hall / SAM

The way we plan, design and redevelop our cities is in transition. This transition follows the rapid and current changes in our society towards the circular and versatile ‘Next Economy’ and the emerging and smart ‘Next City’ that is livable, inclusive and cherishes bottom-up initiatives. ISOCARP, the International Society of City and Regional Planners, the host and organizer of the International Next City Seminar, invited experts to present in six 20 minutes pitches the lessons learned from best practices in Japan, India, Australia, Russia, China and the Netherlands. In a concluding panel we will discuss how cities and, as a result of this, the planning and architecture professions are changing.

Martin Dubbeling, Urbanist, Vice President of ISOCARP, Connecting Cities / Yana Golubeva, Head Architect, MLA+ / Hugo Lamb, Co-founder & CEO, The Space Agency / Bec McHenry, Co-founder & CEO, Space Agency / Vinayak Bharne, Director of Design, Moule & Polyzoides Architects and Urbanists / Saskia Spijkerman, Principal, Saskia Spijkerman Architect BNA / Dhuru Thadani, AIA, Principal, Architect + Urbanist

## BREAK

3:45-4:15 PM

Grab coffee, tea, and other refreshments in the Grand Lobby of the Benaroya or Lobby of the Seattle Art Museum.

## NEXT GENERATION PARKING STRATEGIES AT ALL SCALES

4:15-5:30 PM, Arnold Board Room / SAM

Next Generation Parking Strategies balance supply and demand, identify parking availability, and provide systems that are user-friendly. These strategies are incorporating technologies and evolving as vehicle ownership decreases and users shift travel modes. Private and public entities are considering how to manage curb space as a whole to accommodate varying these shifts in travel models. In addition, decisions are increasingly being driven by data, allowing parking pricing to better align with demand to encourage turnover and improve predictability and availability throughout the day.

A strong parking program requires sound information and resources to maintain reliable access to parking and support businesses and the movement of people and goods. This session brings together transportation analysts, planners, and developers from the private and public sector to discuss how we are planning for parking in the future.

Alex Brennan, Senior Planner, Capitol Hill Housing / Stefanie Herzstein, Senior Transportation Engineer, Transpo Group / Dan McKinney, Principal, Transpo Group / Daniel Rowe, Senior Transportation Planner, King County Metro Transit

## UNDOING EXCLUSIONARY ZONING IN HIGH-COST CITIES

4:15-5:30 PM, Plestcheeff Auditorium / SAM

Many high-cost U.S. cities are faced with housing shortages exacerbated by rules that restrict homebuilding. Bringing together experts from Seattle, Portland, and Oakland, this session will examine the latest efforts to improve equitable access to housing by fixing overly restrictive zoning and regulations.

Dan Bertolet, Senior Research, Housing and Urbanism, Sightline Institute / Kate Howe, Director, VIA Architecture / Madeline Kovacs, Programs Coordinator, Portland for Everyone / Spencer Williams, Legislative Assistant to Seattle City Councilmember Rob Johnson

## ART ROOM: TOD DESIGN TECHNIQUES

4:15-5:30 PM, Simons Board Room / SAM

More and more communities are seeking to grow with less reliance on the automobile by encouraging Transit-Oriented Development (TOD). Design matters! Learn to employ specific physical design principles to ensure these new developments function properly and result in great places.

Neal Payton, AIA, Principal, Torti Gallas and Partners, Inc.

## OI: COMMUNITY ENGAGEMENT, TO IMPROVE OR HACK IT?

4:15-5:30 PM, Founders Room / Benaroya

On improving the public process, Will Dowdy will explore the growing field of economic cartography, which maps and visually presents land values, diving into the nuts and bolts of bringing the ideas that have been developed by Urban3, StrongTowns, and others. Jennifer Griffin will talk about how communities of faith stand in an important position to support vibrant, walkable, mixed-use neighborhoods. Larry Schooler will pull from his experiences in Austin, TX to highlight productive, powerful public engagement for new urbanists. Claire Flurin will present the PUREHOUSE LAB, a non-profit crowd-sourcing platform that facilitates the creation of co-living spaces. Then, Bill Lennertz of the National Charrette Institute shares “Collaboration by Design,” the principles and tools that take the public beyond involvement to commitment.

On hacking the public process, Jonathan Berk will talk about empowering residents to rebuild their public spaces from the ground up, pairing hyper crowdfunding campaigns with state funding. Timo Hämäläinen will share how a grassroots masterplan was designed by a group of activists to hack Helsinki’s official masterplan process, bypassing the typical barriers to public participation.

Margaret Wallace Brown will conclude this session by conducting a mini-workshop, asking the audience to identify the biggest issues confronting them and their communities, as well as share their brightest ideas about public engagement.

Jonathan Berk, New England Director, Patronicity / Bill Lennertz, Founder, National Charette Institute / Will Dowdy, Urban Designer, City of Eugene / Claire Flurin, Vectuel / Jennifer Griffin, Founding Principal, J Griffin Design, LLC / Timo Hämäläinen, Urban Policy Advisor, MDI - Management Design Intelligence / Larry Schooler, Manager of Public Engagement, City of Austin / Margaret Wallace Brown, Deputy Director, Planning & Development Department, City of Houston

## 🍺 BEERS WITH ENGINEERS

4:30-6 PM, GGLO’s Space at the Steps, 1301 First Ave

To commemorate CNU 25, Project for Public Spaces invites you to attend our third round of Beers with Engineers. This time around PPS will be toasting engineer’s role in New Urbanism.

Join PPS for a wide-ranging panel discussion about improving our streets and our communities, including designing bike lanes, calming traffic, planning for self-driving cars, fostering equity in transportation and the engineering profession, navigating your transportation department, and more. Our forum is intended to help forge relationships between your local transportation engineer and the interested public.

Gary Toth, Senior Director, Transportation Initiatives, Project for Public Spaces



## Evening

### RECEPTION

5:30-6:30 PM, Grand Lobby / Benaroya Hall

Join CNU for a pre-plenary reception in the Grand Lobby of the Benaroya Hall and mingle with fellow attendees, exhibitors, and friends.

### PLENARY: THE PAST AND FUTURE CITY

6:30-7:30 PM, Recital Hall / Benaroya

As cities across America experience a remarkable renaissance, and more and more young, diverse families choose to live, work, and play in historic neighborhoods, the promise and potential of using our older and historic buildings to revitalize our cities is stronger than ever. As such, Stephanie K. Meeks, president and CEO of the National Trust for Historic Preservation, provides a detailed look at the innovative ways historic preservation can create thriving communities. She explains the critical importance of preservation for all our cities, the ways the historic preservation field has evolved to embrace the challenges of the twenty-first century, and the innovative work being done in the preservation space now.

This urban resurgence is a national phenomenon, boosting cities from Cleveland to Buffalo and Portland to Pittsburgh. Experts offer a range of theories on what is driving the return to the city, from the impact of the recent housing crisis to a desire to be socially engaged, live near work, and reduce automobile use. However, there is also more to it. Time and again, when asked why they moved to the city, people talk about the desire to live somewhere distinctive, to be some place rather than no place. Often these distinguishing urban landmarks are exciting neighborhoods. Miami boasts its Art Deco district, New Orleans the French Quarter. Sometimes, as in the case of Baltimore's historic rowhouses, the most distinguishing feature is the urban fabric itself. While many aspects of this urban resurgence are a cause for celebration, the changes have also brought to the forefront issues of access, affordable housing, inequality, sustainability, and how we should commemorate difficult history. This presentation speaks directly to all of these issues.

A book signing will immediately follow.

The 2017 Congress Legacy Project teams will also present their final reports to their legacy communities.

Stephanie Meeks, President & Chief Executive Officer, National Trust for Historic Preservation

### NEXTGEN BELLTOWN PUB CRAWL

8-11 PM

A CNU tradition! Make new friends and catch up with the old ones on the annual NextGen pub crawl. Meet from the CNU reception at Benaroya Hall and head to the Belltown neighborhood.

Check the CNU 25.Seattle app for the latest times and locations. Download at [crowd.cc/cnu25](http://crowd.cc/cnu25)

#### Stop 1

Whiskey Bar, 2122 2nd Ave

#### Stop 2

Cursed Oak, 2137 2nd Ave

#### Stop 3

Belltown Brewing, 200 Bell St

#### Stop 4

Screwdriver, 2320 1st Ave, Basement

#### Stop 5

Rabbit Hole, 2222 2nd Ave

### CONSERVATISM ON TAP

8-10 PM, The Alibi Room / 85 Pike St #410 (in Post Alley)

Are you temperamentally conservative? A self-identified libertarian or a fiscal hawk? Center-right curious? The R Street Institute and The American Conservative invite you to gather with like-minded urbanists for a casual reception at The Alibi Room. Shelter within the walls of this speakeasy deep within Pike Place Market to meet and drink with other conservative urbanists from across the country to compare notes and lift a toast to traditional development.

### THE NEW URBAN FILM FESTIVAL

7:30-10:30 PM, Northwest Film Forum, 1515 12th Ave in Capitol Hill

The New Urbanism Film Festival showcases short and feature length documentaries about the urban environment. Held every Fall in Los Angeles, audiences are engaged in new urbanism theory, history, and practical case studies. This special event showcases the winning short films from the 2016 festival. Sponsored by B+H Advance Strategy.



Folks in Seattle buy the most sunglasses per capita than any other U.S. city.

# Friday 5/5

## Morning

### REGISTRATION

7 AM-7 PM, Grand Lobby / Benaroya Hall

Pick up your badge, bag, and printed program at the Registration Desk and interact with exhibitors in the Grand Lobby of the Benaroya Hall. Registration will move to the lobby of the Recital Hall after 2pm.

### RUNNING WITH URBANISTS

7-8 AM, Meet outside of Benaroya Hall

Bring your running shoes and join your fellow urbanists for a no-drop morning run around Central Seattle. Don't worry: you'll get back in plenty of time for morning sessions. We will form a couple of pace groups if desired, including a slower one and a moderately-paced one, so runners of all speeds and experience are welcome.

John Simmerman, Co-founder, President & CEO, Active Towns

### BREAKFAST

8-9 AM, Grand Lobby / Benaroya Hall

Enjoy a continental breakfast in the stunning Grand Lobby of Benaroya Hall.

### MEMBER-LED: CNU MEMBERS CHRISTIAN CAUCUS

7:30-9 AM, Mezzanine Level of Grand Lobby / Benaroya Hall

The CNU Members Christian Caucus—whose purpose is to support CNU by extending the concepts and practices of New Urbanism to the Christian community—is convening for a breakfast meet-up and annual business meeting. To learn more about the CNU-MCC e-mail Chris Elisara at [ccspchris@mac.com](mailto:ccspchris@mac.com).

Grab your breakfast and head the mezzanine (2nd) level of the Grand Lobby in the Benaroya Hall.

### SMALL DEVELOPER MORNING MEETUP

8-9 AM, Founders Room / Benaroya

A gathering of developers and aspiring developers interested in building smaller scale/incremental urban projects. Rookies, come and find a mentor, expand your network, and reduce your learning curve! Seasoned developers, come and help rookies avoid your mistakes.

Grab breakfast beforehand or bring it with you to the Founders Room in the Benaroya Hall.

### TOUR: REIMAGINING SEATTLE'S WATERFRONT

8-11 AM, Tours Desk / Benaroya Lobby

In this tour, Congress attendees will examine the progress and vision of Waterfront Seattle, a multi-year program to transform Seattle's waterfront following the removal of the Alaskan Way Viaduct. Spanning from Pioneer Square to Belltown, the project area includes new park space, improved connections to and from downtown, a new surface street, access to Elliott Bay, and a rebuilt Elliott Bay Seawall. Led by the director of the Office of the Waterfront, participants will discuss design efforts to capitalize on view opportunities, project partners like the historic Pike Place Market, and the challenges and opportunities of removing an elevated highway to open up a waterfront.

Joshua Curtis, Partnerships Manager, Office of the Waterfront, City of Seattle / Wren McNally, Associate, EnviroIssues

### RETROFITTING WATER

9-10:15 AM, Recital Hall / Benaroya

Climate change, groundwater depletion, combined sewer overflows and water quality issues are challenging communities everywhere—especially where suburban development patterns exacerbate the problems. A number of suburban retrofits have seized the opportunity to rethink how we deal with water and provide useful lessons for new urbanists. Starting with an overview of innovative case

studies retrofitting water, this session will then dive deeply into how Hassalo on 8th in Portland saves money and water quality with the nation's largest organic water recycling machine and how the retrofit of the 116-acre Parkmerced apartment complex outside of San Francisco is reversing decades of aquifer depletion while urbanizing.

Leo Chow, AIA, Design Partner, Skidmore, Owings & Merrill LLP / Ellen Dunham-Jones, Professor of Architecture and Urban Design, Georgia Institute of Technology / Pete Munoz, Bioregional Team Lead, Biohabitats

## 25 BREAKING DOWN BARRIERS TO INCREMENTAL DEVELOPMENT

9-10:15 AM, Founders Room / Benaroya

This session will provide ways to work around and through regulatory barriers to incremental development. We will discuss the concept of Regulatory Blight and discuss ways to get past this from both a municipal and private sector standpoint. There will be a specific focus on putting typical Main Street buildings back into productive use, with pathways to navigate building codes and ADA. Specific incremental redevelopments will be presented to demonstrate these principles as well. The goal is to highlight places that Lean and Incremental Urbanism can thrive and flourish.

Eric Kronberg, Principal, Kronberg Wall Architects / Thomas Pacello, President, Memphis Medical District Collaborative / Paddy Steinschneider, President & Founder, Gotham Design & Community Development Ltd.

## DIVERSIFYING URBAN DESIGN

9-10:15 AM, Plestcheeff Auditorium / SAM

Sit at the tables where it's decided where new housing will go, or how to add bike lanes to a city street, or whether resources will be allocated to protect clean water, and you will probably need to ask "where are all the people of color?" In 2016, it remains the case that the majority of the people who design, plan, and build communities and cities lack the diversity of those same places. This panel will explore the dearth of diversity in urban design and planning—and its impact on our practice and the communities we create and serve. It will also suggest ways to build a pipeline of talent that better reflects the cities in which we live and work.

*Co-organized by the Island Press Urban Resilience Project*

Shelley R. Poticha, Director, Urban Solutions, Urban Program, Natural Resource Defense Council / Justin Garrett Moore, Executive Director, NYC Public Design Commission / Ron Sims, Retired Deputy Secretary, U.S. Department of Housing and Urban Development / Emily Talen, Ph.D., FAICP, Professor, University of Chicago

## ART ROOM: WALKABLE STREET DESIGN 01 - TECHNICAL ESSENTIALS

9-10:15 AM, Simons Board Room / SAM

Walkable streets are fundamental to building livable communities – and their details matter. Join us as we explore the components and dimensions of a wide range of walkable street types, and how to select which street types are appropriate for a given context.

Richard Hall, P.E., President, Hall Planning & Engineering Inc / Kenneth Garcia, Town Planner, Dover, Kohl & Partners

## TRANSPORTATION, PLACE, & PROSPERITY

9-10:15 AM, Nordstrom Lecture Hall / SAM

A wave of "new mobility" innovation has captured the imagination of planners the world over. Bikeshare, carshare, and first-mile/last-mile services are just a few the new approaches. But will such innovations really advance a community's social and economic goals?

At the household scale, new research shows huge gains from well-conceived mobility strategies: Families often face tough trade-offs between housing and transportation expenses—purchase a cheaper house in a fringe location with high transportation costs, or pay more for one close-in with multi-modal access? The lifetime reward for choosing the urban option turns out to be more than one million dollars! Reducing transportation costs and shifting expenditures from mobility to housing offers significant shared benefits too at the neighborhood and regional scales. But not all new mobility strategies promote good urbanism: Indeed, the first-mile/last-mile strategies now embraced by local government may actually promote "transit-induced sprawl," even as they put more people in reach of public transportation.

Learn how the new mobility can shape more prosperous, and livable future communities in this session, and also how advocates can communicate such benefits to households, businesses and public officials.

Peter Katz, Consultant and Author, *The New Urbanism: Toward an Architecture of Community* / Todd Litman, Founder & Executive Director, Victoria Transport Policy Institute

## TOUR: HIDDEN SPACES/PUBLIC PLACES: PRIVATE PROPERTY + PUBLIC AMENITY = ADDITIONAL DEVELOPMENT RIGHTS

10 AM-12 PM, Tours Desk / Benaroya Lobby

Explore some of downtown's hidden treasures, like public parks, plazas and open spaces. Many of these spaces

are owned by private developers but are in fact places where you can enjoy beautiful landscapes and private art collections away from the hustle and bustle of city streets.

Hidden Spaces/Public Places also features a number of stairs and concludes at the Harbor Steps. Please let your guide know if you, or another member of your party, have any restrictions.

This tour is done in partnership with the Seattle Architecture Foundation.

## TOUR: ARCHITECTURE 101: WINDOWS ON SEATTLE'S STYLE

10 AM-12 PM, Tours Desk / Benaroya Lobby

Is God really in the details? Find out as we focus on design elements of buildings ranging from English Gothic to Brutalism and from Beaux Arts to Modernism. Construction techniques, trends in aesthetics and functional considerations of windows and views contributed to these structures. You will explore how the use and incorporation of glass reflects changing societal trends. Featured stops include the Financial Center, the Plymouth Congregational Church and the Fairmont Olympic Hotel. This tour is done in partnership with the Seattle Architecture Foundation.

## TOUR: COMFORTABLE & CONNECTED: CREATING A BASIC BIKE NETWORK IN DOWNTOWN SEATTLE

10 AM-1 PM, Tours Desk / Benaroya Lobby

Seattle's downtown is transforming rapidly, adding jobs and housing at record rates, all while Seattle's light rail system expands dramatically and downtown bus service is restructured. This growth and expansion creates an unparalleled opportunity to implement a safe, comfortable, and connected network of protected bike lanes from downtown to the outlying neighborhoods—creating a true multimodal transportation system. Join representatives from Cascade Bicycle Club and the City of Seattle to discuss the One City Center project (a 20-year mobility plan for downtown Seattle neighborhoods) and explore the city by bike. Learn about the future of downtown infrastructure from those that know it best, and discuss how bikes and transit can work together as an integrated urban mobility solution.

Kelsey Mesher, Puget Sound Policy Manager, Cascade Bicycle Club / Dongho Chang, City Traffic Engineer, City of Seattle / Sandra Woods, Project Manager, Center City Bike Network

## BREAK

10:15-10:45 AM

Grab a to-go cup of coffee, tea, or other refreshment in the Grand Lobby of the Benaroya or Lobby of the Seattle Art Museum and walk over to the Moore Theatre for the morning plenary.

Speaker Info

## PLENARY: DOUG FARR & MAJORA CARTER

10:45 AM-12 PM, Moore Theatre

A challenging morning plenary held in the historic Moore Theatre. Leading urban revitalization strategist Majora Carter examines sustainability from the perspective of human capital, exploring how communities can build wealth "where they are" using talent-retention strategies. Then, Sustainable Urbanism pioneer Doug Farr draws on years of experience and research from his forthcoming book *Sustainable Nation* to lay out a vision for a walkable nation in four generations.

**MAJORA CARTER / COMMUNITIES AS CORPORATIONS** / How can talent-retention strategies mitigate fears of displacement in re-urbanizing America? Decades of social services spending on education, health, and other deficits found in low-status communities have not resulted in greater prosperity there, in part because the individual success stories usually leave in search of lifestyle infrastructure that meets their demands as soon as they are able. The absence of local reinvestment paves the way so called "gentrification" and bargain hunting by outsiders. How can we help people see the value of where they are, and incite them to build wealth where they are?

**DOUG FARR / A SUSTAINABLE NATION IN FOUR GENERATIONS** / The timeline of climate change is long, but our time to act is short. Even the best-intentioned sustainable building rating systems barely make a dent in reducing the emissions that are leading to an increasingly warmer, less-predictable planet. Moreover, humans are ill equipped for the long-term and collective thinking required for meaningful climate change action. In his address to the Congress, author of *Sustainable Urbanism* Doug Farr examines the powerful cultural forces in recent history that have successfully influenced societies' behaviors for the better and expands on the themes from his forthcoming book, *Sustainable Nation*, to lay out a path forward for a sustainable nation in four generations.

Majora Carter, Urban Revitalization Strategy Consultant, Real Estate Developer, Marjora Carter Group / Doug Farr, CNU-A, President and Founding Principal, Farr Associates Architecture & Urban Design / Lynn Richards, President & CEO, CNU

## Afternoon

## LUNCH

12-2:30 PM

Lunch on your own. Stroll through Pike Place Market, visit the food trucks at Westlake Park, or dine in nearby Pioneer Square. Or if you're in a hurry, grab lunch in the Benaroya's cafe area.

**IF YOU'RE PARTICIPATING IN A MEMBER-LED SESSION, REMEMBER THESE START PROMPTLY AT 1 PM. KEEP IN MIND THAT YOU'RE NOT ALLOWED TO BRING FOOD INTO OUR MEETING ROOMS.**

### MEMBER-LED: YOU CAN FINANCE NEW URBAN!

1-2 PM, Simons Board Room / SAM

The session will report on major progress recently made by the Federal Housing Finance Initiative that CNU began years ago. It will feature a presentation by Ben Schweitzer from Freddie Mac. Freddie's "Small Balance Loan Program" (SBL) is a close match to what the Initiative has sought. It offers long-term finance for projects with up to 40% non-residential use (49% in some situations, e.g. if rents are affordable). The loan caps were recently raised by 50% for high cost markets (to \$7.5 million) and 100% (to \$6 million) elsewhere. Yes, Virginia, New Urbanism CAN be financed!

Ben Schweitzer, Underwriting Director, Freddie Mac Multifamily / Richard L. Oram, Chairman, Fund for the Environment and Urban Life

### MEMBER-LED: IMPLEMENTING THE NEW URBAN AGENDA (CNU MEMBERS INTERNATIONAL CAUCUS) NUA PART 1

1-2 PM, Nordstrom Lecture Hall / SAM

In the last two years, three important urban initiatives have been agreed by most governments of the world, including the Paris Climate Accord, the Sustainable Development Goals, and especially relevant to us, the New Urban Agenda. But how will these agreements be implemented, and what role will New Urbanists play? Learn about the contents of the New Urban Agenda, and the role you might play in the implementation effort. (See Saturday's Part 2 session.)

This session will also launch the new CNU Members International Caucus, which is preparing to participate in an upcoming international "council" of urbanists.

Joanna Alimanestianu, Co-founder, Council for European Urbanism / Andrés Duany, Principal, DPZ CoDESIGN / Chris Elisara, Producer, First+Main Media / Doug S. Kelbaugh, FAIA, Professor of Architecture and Urban Planning, Taubman College of Architecture and Urban Planning, University of Michigan / Michael Mehaffy, President, Senior Researcher, Structura Naturalis Inc, KTH Royal Institute of Technology

### MEMBER-LED: FORM-BASED CODES / MISTAKES MADE, LESSONS LEARNED

1-2 PM, Arnold Board Room / SAM

Over the last three decades, hundreds of communities have explored the use of form-based codes and many have adopted them. While the first modern code was created for a small resort new town, form-based codes have been adapted to and adopted by communities as diverse as Miami, Nashville, and Santa Ana, CA. In the process, community leaders and code writers have learned how to craft codes that match the culture, vision, and needs of their localities.

In this member-led session, leaders from the Form-based Codes Institute, along with recent winners of the Driehaus Form-Based Codes Award, will lead a workshop for local planners and civic leaders to discuss lessons learned along the way for what works and what doesn't when drafting and implementing FBCs.

Susan Henderson, AIA, LEED AP, CNU-A, Principal, PlaceMakers LLC / Mary E. Madden, Principal, Ferrell Madden Lewis, LLC / Lisa Wise, AICP, President, Lisa Wise Consulting, Inc.

### MEMBER-LED: COMPLETE STREETS + CONTEXT: A BETTER APPROACH FOR STATE DOTS

1-2 PM, Plestcheef Auditorium / SAM

The world of walkable urban street design is changing rapidly. At the state level, the Florida Department of Transportation (FDOT) is leading the way. Prior to CNU 25.Seattle, FDOT will release their Complete Streets Handbook draft. The document's Core Concepts are:

- Streets serve needs of system users of all ages and abilities, including all travel modes
- Streets are context sensitive, where system design considers local land development patterns
- Streets can help to promote safety, quality of life, and economic development

This new document builds on flexibility and innovation to ensure that all state roadways are developed based on their context. These concepts support CNU design principles and represent a major step forward for walkable street design in traditional neighborhood design.

This session will include a briefing based on the FDOT Complete Streets Handbook DRAFT. The goal is to raise awareness and generate comments CNU can send for FDOT use as well as discuss how the Core Concepts within it can inspire state Departments of Transportation around the country to enshrine context-sensitive street design into their state guidance documents. Consider attending the session if streets are ever a concern in your planning and design work.

Richard Hall, P.E., President, Hall Planning & Engineering Inc.

### ARCHITECTURAL & URBAN CHARACTER

2-4 PM, Arnold Board Room / SAM

This session is dedicated to discussing the vital subject of architectural character. Architectural character concerns two scales, that of individual buildings and that of an urban ensemble. In other words, character concerns the compositional qualities that fit each building's purpose (architecture) and the ways in which multiple buildings additively make a sense of place (urbanism). We see this on the level of the building, the street, the square, quarter, city, region and nation. Discussing architectural character allows us to move beyond the problems associated with stylistic classifications, or the so-called style wars.

Douglas Duany, Professor of the Practice, University of Notre Dame / Stefanos Polyzoides, Principal, Moule & Polyzoides Architects & Urbanists / Bill Westfall, Emeritus Professor of Architecture, University of Notre Dame / Samir Younés, Professor, School of Architecture, University of Notre Dame / John Dutton, Principal, Dutton Architects and Adjunct Professor of Architecture University of Southern California

### TOUR: SINGING (IN THE RAIN): WALKING SEATTLE'S FIRST ARTS DISTRICT

2-5 PM, Tours Desk / Benaroya Lobby

Take an essential Seattle stroll through the Capitol Hill Arts District, the City's first official Arts & Cultural District and a nexus of cultural activity for decades. Once known as Auto Row for its 1940's car dealerships, the Pike/Pine Corridor is now one of the most influential cultural neighborhoods on the West Coast. Seattle Cultural Space Liaison Matthew Richer will lead participants through a tour of several of the area's 40+ arts & cultural spaces—which include music clubs, cinemas, theaters, galleries, studios, art supply houses, a dance center, and even a graffiti supply house.

Matthew Richter, Cultural Space Liaison, City of Seattle, Office of Arts & Culture

### TOUR: REMAKING YESLER TERRACE: A NEW URBAN PLACE IN THE CENTER OF THE CITY

2-5 PM, Tours Desk / Benaroya Lobby

In this walking tour, participants will explore the new streets, buildings, and public spaces transforming Yesler Terrace, a low-rise public housing project, into a diverse, thriving neighborhood. Yesler is a lesson in transformation—reintegrating with the Seattle grid, newly connected to the city's International District, and featuring new housing for low-income, moderate-income, and high-income residents. Tour participants will learn about the area's robust arts community, urban farming program, thriving community centers, and new streetcar corridor.

Tom Eanes, Sr. Development Manager, Seattle Housing Authority

### FORUM: AUTONOMOUS VEHICLES & URBANISM

2:30-5:30 PM, Plestcheeff Auditorium / SAM

Every new transportation technology affects the geography of communities and the structure of people's lives. Autonomous vehicles (AVs) are one such technology. Just as the freeway system or the streetcar network shaped past cities and lifestyles, AVs will remake the metropolis once again. The question is how and with what unintended consequences? As with most technology, the answer turns on how the technology is used.

In this 3-hour forum, leading urban thinkers take a dive into the future impact of autonomous vehicles on cities—the risks, rewards, and unknowns.

Peter Calthorpe, Principal, Calthorpe Associates / Ellen Dunham-Jones, Professor of Architecture and Urban Design, Georgia Institute of Technology / Darton Ito, Head, San Francisco's Office of Innovations / Jeremy Nelson, Regional General Manager, Chariot / Brian O'Looney, Senior Associate, Torti Gallas and Partners / Brooke Steger, PNW Regional Manager, Uber / Jean Paul Velez, Leader of Shared-Use Mobility Parenterships, Seattle Metro / Eric Womeldorff, Principal, Fehr & Peers

### THE INTERSECTION OF HISTORIC PRESERVATION & NEW URBANISM: BUILDING ON THE PAST TO EXTEND WALKABLE PLACES

2:30-3:45 PM, Nordstrom Lecture Hall / SAM

The demand for walkable, urban living is at an all time high yet nowhere does the supply meet the demand. Historic neighborhoods are bearing the brunt of increased density, threatening the very character that makes them successful. New Urbanists and preservationists share principles of human-scale walkability and local identity, making them natural allies for great future city-building. It is time the two joined forces to clearly demonstrate the "why, what and how" of protecting historic districts, building appropriate infill and replicating proven patterns of high quality, walkable urbanism. A high-powered panel explores the challenges, solutions and strategies of celebrating the old and extending characteristic new urbanism in New York City, Seattle and New Orleans.

Ann B. Daigle, Urban Regeneration - Design & Strategy, The CityBuilding Exchange / Lynn Ellsworth, President, Chair, Creative Strategy Group, Tribeca Trust / Pres Kabacoff, Executive Chairman of the Board, HRI, Inc, New Orleans / Mike Powe, Director of Research, Preservation Green Lab, National Trust for Historic Preservation / Steven W. Semes, Director, Notre Dame Graduate Studies for Historic Preservation and Author

## ART ROOM: WALKABLE STREET DESIGN 02 - ARTISTIC PLACEMAKING

2:30-3:45 PM, Simons Board Room / SAM

Take your walkable street designs to the next level! We will explore specific ways to apply principles of artistic composition to elevate a technically competent walkable street into a truly great public space.

Richard Hall, P.E., President, Hall Planning & Engineering Inc / Kenneth Garcia, Town Planner, Dover, Kohl & Partners

## OI: MEETING OUR HOUSING NEEDS: INNOVATIVE TOOLS FOR ADDRESSING INFILL, MARKETS, & AFFORDABILITY

2:30-3:45 PM, Founders Room / Benaroya

Laura Poncelet will make a pitch for how both “big architecture” and “missing middle housing” have their place or importance within the city and can be seen as tools within a larger toolkit for good urbanism. Then, Delma Palma explore how “missing middle housing” struggles to address market demands at the rate with which needs are increasing. And Ryan Kilpatrick will highlight one state program designed to dis-incentivize sprawl and support infill development using state resources.

Then, George Proakis, Howard Blackson, Judi Barrett, Dan Bartman, and John Anderson will discuss how New Urbanist codes create predictable, quality outcomes, but often fail to address equity and displacement. This discussion will examine inclusionary zoning and community benefit agreements and ask if they can be tools to reach more equitable outcomes.

John Anderson, Principal, Anderson|Kim Architecture + Urban Design / Judi Barrett, Director of Economic Development, Plymouth Regional Economic Development Foundation / Dan Bartman, Senior Planner, City of Somerville, MA / Howard Blackson, Urban Design & Community Planning Manager, RBF Consulting, a Company of Michael Baker International / Ryan Kilpatrick, City Planner, Economic Developer, Michigan Economic Development Corporation / Delma Palma, Architectural and Urban Designer, Torti Gallas and Partners / Laura Poncelet, Architect, Torti Gallas & Partners / George Proakis, AICP, Director of Planning, City of Somerville, MA

## BREAK

3:45-4:15 PM

Grab coffee, tea, and other refreshments in the Grand Lobby of the Benaroya or Lobby of the Seattle Art Museum.

## SEEDING URBANISM IN LATIN AMERICA

4:15-5:30 PM, Nordstrom Lecture Hall / SAM

In societies like the United States, top-down planning works because of administrative accountability and legal transparency. Regulation is an effective city planning instrument, and transforming urban policy to reverse sprawl has already shown significant results across North America. By contrast, many Central American countries are far more ambiguous in their administrative workings, and policy initiatives while relevant can only go so far. The notion of private developers as agents of urban change therefore becomes even more critical. As evident through this exchange, developers have become the torch-bearers of a better urban future in the wake of murky entitlement processes and weak public sector direction.

The New Urbanism has produced built work throughout Latin America. This session will discuss the successes and shortcomings of this decade-long trans-national exchange by bringing together some of its key players.

Vinayak Bharne, Director of Design, Moule & Polyzoides Architects and Urbanists / Patrick Braga, Student, Cornell University / Jaime de Saint Malo, Co-Founder, Edifyca / Stefanos Polyzoides, Principal, Moule & Polyzoides Architects & Urbanists / David Rodríguez, Architect, Rodriguez + Toledo / Andrew Georgiadis, President, Georgiadis Urban Design

## 25 TAKE ACTION ON INCLUSIVE, SUSTAINABLE URBANISM

4:15-5:30 PM, Arnold Board Room / SAM

As we mark the 10-year anniversary of LEED for Neighborhood Development, we have made significant progress on walkable, sustainable communities. Yet, today’s headlines grapple with persistent and emerging issues of equity, access, and factors affecting basic quality of life and health. These challenges demand a reinvigorated search for solutions. Speakers will take foundational plenary concepts of resilience, equity, and identity down to ground level, reflecting on the value of LEED-ND and sharing emerging strategies and platforms for neighborhood sustainability. From an industrial and entertainment hub in Denver, to the community of the first African American owned bank west of the Mississippi, to a village in upstate New York; you’ll learn about concrete design, planning, development resources to move from an urgently desired vision to implementation. We will conclude with an interactive conversation and inspiring call to action.

Erin Christensen Ishizaki, Partner, Mithun / Donald King, FAIA, Principal Architect, Visiting Professor of Architecture, Mimar Studio, University of Washington / Jessica Millman, Director, Project Bookends / Maiko Winkler-Chin, Executive Director, Seattle Chinatown International District Preservation and Development Authority

# Urbanism for the Next 25 Years: New Techniques for New Challenges

4:15-5:30 PM  
RECITAL HALL /  
BENAROYA

As we mark twenty-five consecutive annual congresses, CNU can celebrate a host of achievements, from detailed technical changes in many of the disciplines that contribute to our built environment, to having fundamentally changed the conversation about good development and redevelopment. But, when we look at the reality of our built environment and ask, “Are we there yet?” the answer is clearly, “Not yet.”

The principles of the New Urbanism establish a physical framework that is inherently flexible and accommodating of change. However, these principles will likely be put to severe tests over the next 25 years with the rapid and dramatic changes in economics, demographics and particularly technology. Will the principles still stand? What new barriers and challenges confront the quest for rational, inclusive, human-scale neighborhoods? Experts from a range of disciplines—some of which did not exist 25 years ago—will present a glimpse of the future.

## 4:20 PM

### 25 JOE MINICOZZI / THE UNEXPECTEDLY FASCINATING MATH OF URBANISM

Joe Minicozzi has documented in city after city how conventional suburban development can be fiscally debilitating for local government’s bottom line, and how there is a crisis looming as a substantial amount of suburban infrastructure will come to the end of its life cycle over the next 25 years. In this presentation, Joe will discuss how local government fiscal reform can be leveraged to advance great urbanism by dialing back the subsidies for the post-WWII suburban experiment.

## 4:40 PM

### 25 ANDRES DUANY & PAUL CRABTREE / ADAPTATION: THE NEXT 100 YEARS

Urban planning commits to the future more than other human endeavors. The present can become a distortion field. Between 2007 and 2017, the 21st century truly began, and we may now glimpse the difficulties that face us. We see climate change and also the possibility that we will fail to meet its challenges and exceed the tipping point. Is adaptation to climate change what follows upon the failure to mitigate the consequences? What is the unique role of New Urbanism in this future?



According to census data, more dogs  
live in Seattle than children.

## ART ROOM: SEEING THE BETTER CITY, MAKING A BETTER PLACE

4:15-5:45 PM, Simons Board Room / SAM

The urban environment is increasingly influenced by digital mapping, simulations, the “internet of things,” and other new technologies. While these tools are valuable for understanding urban space, our increasing reliance on technology puts us at risk of losing sight of the value of personal observation of, and connection to, the cities we live in. This session, based on Chuck Wolfe’s new book, *Seeing the Better City*, will return attendees to the value of visual sense, immersion, and real-world observation as tools to create lasting positive changes in the urban environment. Attendees will hear a presentation about the value of “what they see,” using immersion, and real-world observation as tools to create lasting positive changes in the urban environment. Then, attendees will conduct a field exercise outdoors, using the book’s “urban diary” principles to observe the impacts of urban form, neighborhood dynamics, transportation, and other elements they witness in their daily lives.

Chuck Wolfe, Principal, Principal Advisor, Charles Wolfe Attorney at Law, Seeing Better Cities Group

## Evening

### CHARTER AWARDS RECEPTION

5:30-6:30 PM, Recital Hall Lobby / Benaroya

Join us for drinks before the 2017 Charter Awards Ceremony in the Benaroya Rectial Hall Lobby, 2nd Floor. Sponsored by Michael Baker International, LLC.

## 2017 CHARTER AWARDS CEREMONY

6:30-7:30 PM, Recital Hall / Benaroya

The CNU Charter Awards recognizes exemplary work in architectural, landscape, urban, and regional design, as defined by the Charter of the New Urbanism. Join this year’s jury chair Stephanie Bothwell for an evening honoring this year’s Charter Awards recipients.

The ceremony will also honor the winner of the 2017 Groves Award, Barranco Award, and Driehaus Award. CNU will be honored with a special award for contributions to the public realm from The Richard H. Driehaus Foundation.

To cap off the evening, a very special third class of CNU Fellows will be announced.

Stephanie Bothwell, ASLA, Principal, Stephanie Bothwell Urban & Landscape Design / Michael Lykoudis, Francis and Kathleen Rooney Dean of the School of Architecture, University of Notre Dame

### STRONG TOWNS DEBATES

8-9:30 PM, 1927 Events, 1927 3rd Ave

The Debates are back! Loud music: check. Audience voting: check. Snarky panel: check. Oh, and beer. A hardcore mashup of Oxford Debating meets American Idol. Match-ups to be announced soon. Brought to you by Strong Towns.

Charles Marohn, P.E., AICP, President, Strong Towns

### CNU 25.DANCE PARTY

9:30 PM-12 AM, 1927 Events, 1927 3rd Ave

Get your dancing shoes ready and celebrate CNU being awarded the Driehaus Prize special award! DJ PlaceMakahs will be spinning your favorite dance tunes.

# Saturday 5/6

## REGISTRATION

7 AM-2 PM, Lobby / Seattle Art Museum

Pick up your badge, bag, and printed program at the Registration Desk in the Seattle Art Museum lobby.

## Morning

### IMMERSION DAY: VANCOUVER, BC: CITY BY DESIGN

7-12 AM, Tours Desk / Benaroya Lobby

Discover for yourself why Vancouver, BC is internationally known as a livable, multimodal “city by design”. Join host Brent Toderian, former Vancouver chief planner and noted urbanist, along with a team of leading local planners and designers for this day-long excursion. Arrive in Vancouver Saturday morning by bus and begin with a walking tour of Vancouver’s renowned downtown, followed by lunch at a local eatery. Then choose between continuing the walking tour to explore the Downtown Eastside (including Woodward’s Project) and the 2010 Olympic Village or Metro Vancouver’s high-density transit-oriented development along the Skytrain, the world’s longest automated rail system. Depart Vancouver after dinner to return to Seattle, or stay overnight and continue your own self-guided exploration. Valid passport required.

Brent Toderian, MCIP, Founder, TODERIAN UrbanWORKS

### IMMERSION DAY: PORTLAND, OR

7 AM-11:30 PM, Tours Desk / Benaroya Lobby

Break free from your Saturday breakout session and explore the rest of the Pacific Northwest with our Portland, OR Immersion Day. Hop on a Portland-bound bus Saturday morning and spend the day exploring the city’s active neighborhoods, food truck scene, participating in locally-organized walking and biking tours, or setting off on your own with transit pass in hand. Registered participants many sign up for tours departing at 1 PM (Portland’s Bicycle Infrastructure,

Pearl District and Northwest Alphabet District, Eastside Streetcar Neighborhoods, or Central City: The Pearl to Tilikum Crossing) and tours departing at 4pm (Eastside Missing Middle Housing, Orenco Station: 20 Years of Evaluation, and Stemming the Tide of Gentrification: Claiming Place for Portland’s African American Community), or opt to venture off on their own for the afternoon.

### TOUR: WALK N’ ROLL IN VICTORIA, BC

7:30 AM-7:30 PM, Tours Desk / Benaroya Lobby

The increasingly cosmopolitan Canadian harbor city of Victoria, BC offers a rare juxtaposition of heritage, charm, scenic backdrops, outdoor amenities, and classic New Urbanism. After a beautiful passenger-only ferry ride across the Salish Sea, join walkability guru Dan Burden and local guests for an educational tour on the art of healthy city-making—exploring topics of density, sustainability, compact block form, local streets, alleys, street networks, biophilic design, and more. Participants should bring a passport, small backpack, water, snacks, and rain gear.

Dan Burden, Director of Innovation and Inspiration, Blue Zones / Todd Litman, Founder & Executive Director, Victoria Transport Policy Institute / Samantha Thomas, Built Environment Manager, Blue Zones

## BREAKFAST

8-9 AM, Lobby / Seattle Art Museum

Start the final day of the Congress off right: coffee and light breakfast provided at the Seattle Art Museum.

## POP-UP PLAYGROUND

10 AM-1 PM

Urbanist youngsters and parents alike are invited to enjoy a pop-up playground outside of the Seattle Art Museum, designed by Parents for a Better Downtown Seattle.

## THE THIRTY YEARS WAR: NEW URBANISM AND THE ACADEMY

9-10:15 AM, Plestcheeff Auditorium / SAM

The session will probe, diagnose, and perhaps suggest remedy for the corrosive antagonism that has existed since the dawn of CNU between most schools of architecture

and New Urbanism. Much of this conflict is superficial and stylistic; some is willful ignorance on both sides; some is deeply grounded in underlying theories of architecture and urbanism, and some in substantive differences in world view. Four veterans, scarred in the cross-fire, will discuss what they have learned in decades of combat.

Doug S. Kelbaugh, FAIA, Professor of Architecture and Urban Planning, Taubman College of Architecture and Urban Planning, University of Michigan / Alan Plattus, Professor of Architecture and Urbanism, Yale School of Architecture / Daniel Solomon, Principal, Mithun | Solomon / Marilyn Taylor, Professor of Architecture & Urban Design, University of Pennsylvania

## OI: EMPLOYING LEAN THINKING

9-10:15 AM, Nordstrom Lecture Hall / SAM

What does it mean to be lean? Gerald Erion will sketch out his concepts for a lean ethics framework. Bruce Donnelly will talk about how “demonstration projects” and other provocations can excite people to take chances. Getting these projects right can lead to a process he calls “insurgent competence.” Then, Nicole Rebeck will evaluate methodologies of tactical urbanism, identifying ten tools for measuring impacts. Dagmar Frinta will present the idea of a Guild for Boomers—an idea that calls for financially-secure baby boomer retirees to support younger artists/educators by attending/flourishing-in/financing guilds.

Stephen Coyle will discuss the schism between cities favoring big development juxtaposed to small development that can happen incrementally and present a lean way for smaller projects to gain favorable footing. Finally, Robert Orr will present his ideas for creating micro manufacturing centers as a way of bringing personal-scaled clean industry into the neighborhood as another piece of mixed-use, small, nonintrusive industry embedded within neighborhoods.

Stephen Coyle, AIA, LEEP-AP, Owner, Town-Green / Bruce F. Donnelly, Urban Planner, Office of Bruce F. Donnelly / Gerald Erion, Professor of Philosophy, Medaille College, Buffalo, NY / Robert Orr, FAIA, LEED, Principal, 2-term President, Robert Orr & Associates LLC, CNU New England / Nicole Rebeck, Landscape Designer, Design Workshop, Inc / Paddy Steinschneider, President & Founder, Gotham Design & Community Development Ltd.

## NEW URBAN RESEARCH

9-10:30 AM, Arnold Board Room / SAM

Over the past 25 years, the New Urbanist movement has created and popularized many now-common practices, including mixed-use development, transit-oriented development, traditional neighborhood design, integrating design standards into affordable housing, and designing complete and beautiful streets. Together, we have fundamentally changed the conversation from debating

alternative patterns of development to discussing how best to design, restore, and preserve our cities.

A new wave of urbanists and academics have made significant contributions to the study new urban practices. This session features the latest research contributions to the movement from the researchers themselves.

Eric Dumbaugh, Associate Professor and Graduate Coordinator, School of Urban and Regional Planning, Florida Atlantic University / Kristin Floberg, Transportation Planning Aide, Western Connecticut Council of Governments / Dawn Haynie, Assistant Professor, Georgia State University / Christopher McCahill, Senior Associate, State Smart Transportation Initiative / Shea O'Neill, Research Associate, U3 Advisors / Alena Shlyakhovaya

## 🗺️ TOUR: KING STREET STATION: SEATTLE'S CULTURAL COMMUNITY HOMESTEAD

9-11 AM, Tours Desk / Benaroya Lobby

Explore how the historic King Street Station, built in 1906 as a transportation hub for the City of Seattle, has been reimaged by the City of Seattle and redesigned with a \$50 million investment. This hardhat tour will take place right as ground is being broken on the Office of Arts & Culture's renovations project, which centers around retrofitting the building's top floor to house an 8,500 square foot exhibition hall, a “Gray Box” performance and installation space, a 2,500 square-foot Living Room / meeting space for artists and cultural projects, as well as spaces for lectures, rehearsals, classes, studio art, and more.

Jerry Garcia, Principal, Olson Kundig Architects / Matthew Richter, Cultural Space Liaison, City of Seattle, Office of Arts & Culture / Bill LaBorde, Senior Policy Advisor, Seattle Department of Transportation

## 🗺️ TOUR: SUSTAINABLE URBAN LIVING IN BAINBRIDGE ISLAND

8:30AM-1 PM, Tours Desk / Benaroya Lobby

Providing an overview of New Urbanist trends and transportation issues in the Puget Sound Region, this tour follows a typical Seattle ferry trip from downtown to Winslow in Bainbridge Island. Along the way, participants will experience a unique perspective on the waterfront, the Sound, and the City's planned streetcar and light rail expansions. Upon arrival at Bainbridge Island, participants will review recent residential and commercial developments in the downtown area that are helping to increase density and livability and cap the tour with a visit to the sustainable, affordable Grow Community.

Rick Williams, Partner, Van Meter Williams Pollack LLP / Manuel Soto, Owner, Mobility & Walkability Consulting

## BREAK

10:15-10:45 AM

Grab coffee, tea, and other refreshments in the Lobby of the Seattle Art Museum.

## NEW URBANISM & THE CLIMATE CRISIS

10:45 AM-12 PM, Simons Board Room / SAM

For over two decades CNU and its members have worked to build sustainable places and preserve the natural environment. From developing energy-efficient TOD and LEED for Neighborhood Development to adopting the Canons for Sustainable Architecture and Urbanism as a companion to the Charter, our projects, congresses and writings have helped pave the way for building greener, healthier, and more sustainable communities.

But the climate crisis is intensifying and we need to do more. It is critical that we continue to expand our knowledge base, share our expertise, collaborate with others in the field, and apply our skills to this immense, over-arching challenge. Come join our open conversation about how CNU and our members can best address the compounding impacts of climate change.

Doug S. Kelbaugh, FAIA, Professor of Architecture and Urban Planning, Taubman College of Architecture and Urban Planning, University of Michigan / Elizabeth Moule, Principal, Moule & Polyzoides Architects & Urbanists / Anne Tate, Professor, Rhode Island School of Design

## OI: NEW URBANIST COMMUNICATION MODALITIES

10:45 AM-12 PM, Nordstrom Lecture Hall / SAM

A critical yet overlooked and underdeveloped sector of the New Urbanism movement is communications: How the New Urban movement can successfully reach: the general public, the community within which development is proposed, the community that is considering changing land use policies, and other audiences that might otherwise be open to its message. The aim of this session is to analyze and discuss how to grow and advance New Urbanism's communications sector.

To highlight how it's been done elsewhere, Claire Flurin and Clement Bellec will present and demonstrate Victuel, an award-winning European “urban tech” company that develops visual communication and collaboration tools for urban planning and real estate development. Victual's interactive 3D, scenario-based presentation and analysis platforms serve at all stages of urban developments as communication and marketing supports, but most importantly for engagement, collaboration, and participatory planning.

Clement Bellec, Vectuel / Bruce F. Donnelly, Urban Planner, Office of Bruce F. Donnelly / Claire Flurin, Vectuel / Steve A. Mouzon, AIA, LEED, Principal, The New Urban Guild / Nathan Norris, Director of Education & Training, Congress for the New Urbanism / John Paget, Paget Films

## OI: CIVIC GREAT ROOMS: A REMODELER'S GUIDE

10:45 AM-12 PM, Plestcheeff Auditorium / SAM

A complete, self contained session, using OI rules, on major, recent renovations of signature public spaces of major cities, from charrette to implementation: the place that symbolizes the city, where people gather for when they are very happy, very angry, very proud or very scared. Join the leaders and designers from Cleveland Public Square, Toronto Nathan Philips Square, El Paso's El Jacinto Square, Philadelphia's Dilworth Park, and L.A.'s Pershing Square for an informative session on what it takes to remodel great civic spaces to meet the demands of the 21st Century.

Larry Gould, Principal, Nelson\Nygaard / Greg Burrell, Associate, The Olin Studio / Ying-yu Hung, Managing Principal, SWA Group / Paul Kulig, Urban Design + Transportation Leader, Perkins+Will / Eduardo Santana, Executive Director, Pershing Square Renew

## 🗺️ TOUR: PLACEMAKING IN DOWNTOWN REDMOND

11 AM-3 PM, Tours Desk / SAM Lobby

This tour brings participants to the vibrant downtown core of Redmond, WA, a tech industry and startup hub, and one of two designated regional growth centers in the city. With a newly-approved light rail expansion and a population expected to grow by more than 5,000 by 2030, the city has planned and implemented projects aimed at creating community gathering places as well as making downtown easier to navigate by foot, bike, and transit. This walking tour will look at several projects including the Redmond Central Connector, the Cleveland Street redesign, and Downtown Park. Participants will have the option of having lunch in Redmond before returning to Seattle.

Jeff Churchill, Transportation Strategic Advisor, City of Redmond / Carolyn Hope, Park Planning and Cultural Arts Manager, City of Redmond / Gary Lee, Senior Planner, City of Redmond / John Marchione, Mayor, City of Redmond / Philip Harris, AICP, Senior Planner

# City As Platform Sessions

9 AM-12 PM

## HOW GREEN STORMWATER INFRASTRUCTURE CAN HELP URBAN NEIGHBORHOODS THRIVE

Belltown

Belltown is the nation's 6th fastest growing neighborhood. The community is taking the opportunity to promote sustainable economic development while retaining the neighborhood's cultural richness and promoting an urban ecology vision. One of the ways to meet these multiple goals is with green stormwater infrastructure (GSI) tools, such as bioretention, green walls, green roofs, and rainwater harvesting.

Seattle's Belltown is an ideal laboratory for expanding GSI to meet multiple community outcomes. Seattle 2030 District, a non-profit sustainable building organization, together with Growing Vine Street and Project Belltown, lead a tour of existing community projects, future visions, and intersections with the waterfront redevelopment projects. Afterward, engage in a discussion that explores how to scale these efforts so neighborhoods can use GSI to extend enhance their community while also meeting city and regional stormwater management goals.

Amy Waterman, Green Stormwater Program Manager, Seattle 2030 District

## GENTRIFICATION & THE THREAT TO BLACK CHURCHES IN CENTRAL SEATTLE

Central District

With the Seattle's rapid growth and development, many long-time residents face the threat of displacement. In the Central District, there is an urgent need to slow cultural displacement and a desire for solutions that can preserve a diverse community. Churches and neighborhood groups from the Central District are proposing a strategic plan to do just that, by engaging in the community-led

development (and re-development) of land owned by predominately Black churches.

Donald King, Mimar Studio

## CROSSING THE CANYON: DESIGNING FREEWAY LIDS TO RECONNECT SEATTLE

Downtown

Seattle's densest and most active neighborhoods have long been divided by the Interstate 5. As vacant land disappears, real estate values increase, and the need for public infrastructure grows, lidding over the freeway for parks, affordable housing, a downtown school, and other uses becomes a viable way to connect long-separated neighborhoods.

Join the Lid I-5 Steering Committee and Freeway Park Association for a tour of Freeway Park, the first lid park in Seattle and among the first in the nation. Experience the on-the-ground conditions the freeway imposes on local communities. Then, participate in a "mini-charrette" exploring the challenges and opportunities of freeway lids for central Seattle, based on local context and nationwide case studies. The workshop's goal is to produce recommendations for the scope of an upcoming lid feasibility study, conceptual lid designs, and improvements to the existing Freeway Park. Learn more at [www.lidi5.org](http://www.lidi5.org).

John Feit, Lid I-5 Steering Committee

## RAINIER ARTS CENTER (RE)DESIGN: ARTS & COMMUNITY

Columbia City

Located at the gateway to the Columbia City Historic District in Southeast Seattle, the Rainier Arts Center (RAC) is an iconic cultural community asset. The facility was purchased in 1997 by SouthEast Effective Development (SEED), and has since operated as an arts venue and community facility. As one of the few affordable spaces in this rapidly gentrifying community, SEED is approaching the modernization of the building, mindful of its mission to provide a performing arts venue and a community-serving space for events and groups. Moreover, this community anchor needs to financially perform for long-term sustainability.

Preservationists, designers, and artists: Join SEED and fellow Congress participants to help identify multi-purpose improvements that better serve the organization's programmatic and financial objectives. Preserving the building's historic character is key! This hands-on workshop will result in a series of design recommendations to help guide future planning and renovation efforts.

Celia Weisman, SEED

## Afternoon

### LUNCH

12-2 PM

Lunch on your own. Stroll through Pike Place Market or dine in nearby Pioneer Square.

### MEMBER-LED: INTERSECTIONAL FEMINISM & THE NEW URBAN AGENDA / NUA PART 2

12:30-1:45 PM, Simons Board Room / SAM

On January 25, 2017, the United Nation's General Assembly adopted the New Urban Agenda. The NUA is an action-oriented document which sets global standards of achievement in sustainable urban development and prompts a rethinking of the way we build, manage, and live in cities through drawing together cooperation with committed partners. This diverse panel of women will provide rich discourse on women's history and future as agents of change in shaping the way cities grow and in designing housing policies, economic opportunities, transportation systems, services, streets, parks and much more.

*Because of the mid-day placement of this session, attendees are encouraged to bring lunch with them.*

Laura Clemons, Founder & CEO, Collaborative Communities

### LEAN URBANISM DEBATES

2-3:15 PM, Plestcheeff Auditorium / SAM

Lean Urbanism is community-building that requires fewer resources, a response to the requirements, complexities and costs that disproportionately burden small-scale developers and entrepreneurs. The Project for Lean Urbanism is developing tools to allow more people to participate in the building of their homes, businesses, and communities. The tools focus on incremental, successional growth, reducing the resources required for compliance, and providing ways to work around onerous financial, bureaucratic, and regulatory processes.

Not everyone agrees on the best approach to Lean practices. After an update on the Project for Lean Urbanism, this session gets the Congress back to its roots: contributors and visionaries within the Lean Urbanism movement debate the merits of Lean tools and approaches. Don't miss it.

Hank Dittmar, Director, Dittmar Associates Limited / Andrés Duany, Principal, DPZ CoDESIGN / Brian Falk, Director of Publications, Center for Applied Transect Studies

### OI: ARCHITECTURE & THE ZEITGEIST

2-3:15 PM, Nordstrom Lecture Hall / SAM

Daniel Morales will address authenticity in architecture, exploring how humane architecture can return beauty as a guiding principle of great urbanism, both new and old, regardless of changing technologies. Phil Langdon will talk about encouraging local stakeholders to share their efforts to upgrade and improve the streetscape, shared spaces, and façades facing the public realm along neighborhood corridors as a way to create great gathering places. Then, Paul Whalen will present demonstrates how towers can be integrated into the traditional grid of low-rise buildings, adding density to historic cities around the world. At the other end of the scale, Pedro Quintanilla will show about how strip mall retail can be retrofitted incrementally to improve the quality of place.

To elevate the discussion further, Steve Mouzon, Eric Moser, Kenny Craft, and Nathan Norris will provide a critique of modern materials in new urbanist construction.

Kenneth Craft, Principal, Craft Design Studio, LLC / Philip Langdon, Author, *Within Walking Distance: Creating Livable Communities for All* / Daniel Morales, Company Architect, Parkwood Homes / Eric Moser, Principal, Moser Design Group / Nathan Norris, Director of Education & Training, Congress for the New Urbanism / Peter Quintanilla, Senior Associate, Senior Urban Designer, PlaceWorks / Paul Whalen, AIA, Partner, Robert A.M. Stern Architects LLP / Steve A. Mouzon, AIA, LEED, Principal, The New Urban Guild

# City As Platform Sessions

2-5 PM

## LAKE CITY FUTURE FIRST: ACTIVATING PUBLIC SPACE

Lake City

Join Lake City Future First as they develop a more consistent and robust activation of our 125th Street Lake City Mini Park. During a brief tour, learn about current programming at the 125th Street Lake City Mini Park and the barriers to activation in this particular park. Then, collaborate with Lake City Future First leadership to brainstorm, sketch, and discuss new activation approaches with Tactical Urbanism experts.

Chris Levenson, Lake City Future First

## KING STREET ENHANCED GREENWAY: REIMAGINING OUR RIGHTS TO OUR RIGHTS-OF-WAY

International District

In dense, urban environments, we need to look beyond public space as a single-solution. The planned construction of Seattle's King Street Greenway has marked an opportunity for the City of Seattle's Department of Transportation, neighborhood community groups and sustainability think-tanks to collaborate on a demonstration project that will explore the future potential of what our city-designated Greenways and Green Streets can be, including improving many of our environmental and health concerns. This City As Platform Session will explore how we can collaborate to prioritize multi-purpose projects within the rights-of-way as part of a new planning process.

Nidhi Gulati | Emerald Network, LivableStreets Alliance / Marisa Hagney, International Living Future Institute

## SHARING SEATTLE: HOW TO CREATE HOUSING THAT FOSTERS RADICAL SHARING

Capitol Hill

The Seattle housing market is dominated by traditional ownership and building forms that create a sharp divide between owner and renter, which can often atomize us and isolate us within our individual housing units. Increasingly, there is a demand for the shared wealth, shared experience, and sense of community that cooperative and cohousing provide, and yet they currently represent only a small fraction of the Seattle housing.

After a tour of the Capitol Hill Cohousing Project, participants will actively discuss ways housing can foster radical sharing, meaning shared economic well-being as well as a shared sense of community and purpose. Additionally, local advocates will leverage participants' expertise to explore cooperative housing and cohousing, working, together to uncover ways to magnify these models in Seattle and beyond.

Boyd Pickrell, Founder, Coho Community Housing / Grace Kim, Schemata Workshop

This year's City As Platform is supported by



## Evening

### 📍 CLOSING PARTY AT QUEEN ANNE BEER HALL

5 PM, 203 West Thomas Street

Please join fellow congress participants for one last drink to cap off CNU 25.Seattle! Meet us at the Queen Anne Beer Hall.

### OI: LOCATIONS FOR LEAN URBANISM

3:45-5 PM, Plestcheeff Auditorium / SAM

Where should Lean Urbanism be applied? Towns and small cities? Major cities? Revitalizing neighborhoods? Industrial zones? Abandoned malls? Which places are the most fertile for Lean Urbanism? Which would benefit the most from Lean tools and techniques?

Stay after the Lean Urbanism debates to discuss and contribute.

Hank Dittmar, Director, Dittmar Associates Limited / Andrés Duany, Principal, DPZ CoDESIGN / Brian Falk, Director of Publications, Center for Applied Transect Studies

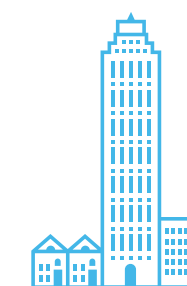
### OI: SUSTAINABILITY & RESILIENCE

3:45-5 PM, Nordstrom Lecture Hall / SAM

On sustainability, Rachel Carlson will be talking about smart siting for new urbanism and how it affects GHGs. On resilience, Samia Kirchner will suggest that coastal cities, like coral reefs, serve as refugees from tyranny and sanctuaries against danger, proposing T7 as an Urban Seascape Transect to guide waterfront development. David Savarese will talk about how design mitigation can add resilience to space, place, and community. Then, Mike Aziz will show cities can transform industrial waterfronts into MakerHoods, applying resilient waterfront design, not the traditional zoning approach.

To round out the session, Michael Murphy will explain "Open Space Equity", and the importance of protecting land in both rural and urban. Laura Clemons will show how the average of a federal disaster declaration every week is costing us a loss of the critical housing stock that we identify as the "missing middle."

Mike Aziz, Urban Designer, Perkins+Will / Laura Clemons, Founder & CEO, Collaborative Communities / Samia Kirchner, Professor, School of Architecture and Planning, Morgan State University / Michael Murphy, Land-use Planner, King County Department of Natural Resources and Parks / David Savarese, Urban Planner, Jacobs Engineering Advance Planning Group / Doug Farr, CNU-A, President and Founding Principal, Farr Associates Architecture & Urban Design



After The Great Seattle Fire in 1889, city residents rebuilt atop the rubble rather than relocate, raising streets up to 22 feet.



# CNU Group Members, Staff & Congress Committee

## STAFF

Lynn Richards, President & CEO

Abigail Sheridan, Deputy Director

Robert Steuteville,  
Senior Communications Advisor

Lisa Schamess,  
Communications Manager

Nathan Norris,  
Director of Education & Training

Kristen Dunphey, Program Associate

Juantiki Jones, Membership Assistant

Alex McKeag, Program Manager

Benjamin Crowther, Program Intern

Grant Cunningham, Program Intern

Taylor Griggs, Congress Intern

## LEGACY PROJECT TEAMS

Opticos Design, Inc

Placemakers, LLC

## LOCAL HOST COMMITTEE

Bill Lennertz, Co-Chair

Janet Shull, Co-Chair

Randy Chatterjee

Erin Christensen Ishizaki

Lawrence Frank

David Goldberg

William Greene

Philip Harris

Sean Hodgins

Sandy Howard

Matthew Lambert

David Laulainen

Vincent Martinez

Morgan O-Grady

Heidi Oien

Tom Phillips

Stephen Poulakos

Megan Ritchie Saffitz

Michael Schuler

Manuel Soto

Patti Southard

Patricia Tillman

Brent Toderian

Cristina VanValkenburgh

Lewis Villegas

Jonathan Winslow

Chuck Wolfe

## GROUP MEMBERS

### Municipal

City of Plano, TX

County of Suffolk, NY

### Benefactor

Canin Associates

City of Wauwatosa, WI

Keystone Masonry

Placemakers, LLC

The Seaside Institute

Strategic Property Partners

Walton Family Foundation

### Champion

Chick-fil-A Foundation

City of San Marcos

Dover, Khol & Partners

DPZ CoDESIGN

Historical Concepts

Jacobs Engineering

Laura Heery Prozes /  
Live/Work/Walk Foundation

Nelson/Nygaard Consulting Associates

Urban Design Associates

Urban3

### Leader

Alta Planning + Design

Beviro

City of Garland, TX

City of Mississauga, ON

City of Rancho Cordova, CA

City of Rockford, IL

Downtown Dallas

Farr Associates

Freese

Fund for the Environment & Urban Life

GID Development Group

Hamilton Anderson Associates

Looney Ricks Kiss

McCann Adams Studio

McKenna Associates

Mibroc Development, Inc

Mithun

Options Real Estate

Parkhill Smith & Cooper

Pinewood Forrest

Raymond Gindroz

Seabrook, WA

Steiner + Associates

TBG Partners

Torti Gallas and Partners

Traditional Neighborhood  
Developments, Inc.

TSW Design

Union Studio Architecture &  
Community Design

Van Meter Williams Pollack

Zimmerman/Volk Associates, Inc

## NATIONAL PROGRAM COMMITTEE

Kristen Jeffers

Matt Lambert

Alex McKeag

Micheale Pride

Lynn Richards

Todd Zimmerman

## PROMOTIONAL PARTNERS

APA Illinois

Alliance for Sustainable Colorado

America Walks

Association of Pedestrian and Bicycle  
Professionals

Atlanta Regional Commission

BlueZones

Boston University Initiative on Cities

Chinatown-International District  
Business Improvement Area (CIDBIA)

Cumberland Region Tomorrow

Evolve Austin

Feet First

George Brown School of Design

Gibbs Planning Group

Michigan Municipal League

Mile High Connects

Municipal Design Review Network

NRDC Urban Solutions

National Endowment for the Arts

National Recreation and  
Park Association

Northeast Coalition of Neighborhoods

Northeast-Midwest Institute

Project for Lean Urbanism

Project for Public Spaces

RRCDC

STREAM Collaborative

Seabrook, WA

The Seaside Institute

Seventhwave

Shared-Use Mobility Center

Transit for Livable Communities

Urban Milwaukee

UrbanCincy

Walk 2 Connect

Winter Cities Conference

## LOCAL PARTNERS

Alliance for Pioneer Square

BlueZones

Business Improvement Area

Cascade Bicycle Club

Chinatown International District

City of Seattle: Office of Planning and  
Community Development, Department  
of Construction and Inspections,  
Department of Transportation,  
Planning Commission, Design  
Commission

City of Tukwila

Central Area Design Guidelines  
Coalition: Central Area Collaborative,  
23rd Avenue ACT, Central are LURC,  
Historic Central Area Arts and Cultural  
District, African American Veterans of  
Washington State

Coho Community Housing

Envirolssues

International Living Futures Institute

King County GreenTools

Lake City Future First

Lake City Greenways

Lid I-5 Steering Committee

Mimar Studio

Puget Sound Regional Council

Ross Chapin Architects

Schemata Workshop

Seabrook Land Company

Seattle 2030 District

Seattle Architecture Foundation

Seattle Housing Authority

SouthEast Effective Development  
(SEED)

## BOARD OF DIRECTORS

Scott Bernstein

Jack Davis

Eliza Harris Juliano, Chair-Elect

Jennifer Hurley, Treasurer

Matthew Lewis

Sarah Lewis

Marcy McInnelly, Chair

Scott Polikov

Russell Preston

Micheale Pride

Lynn Richards, President & CEO

Dan Slone, Secretary

Lee Sobel, Chapter Rep

John Torti

Laurie Volk

## BOARD EMERITUS

Peter Calthorpe

Robert Davis

Andres Duany

Elizabeth Moule

Elizabeth Plater-Zyberk

Stefanos Polyzoides

Daniel Solomon



# CNU 25. Seattle

## SPONSORS

### TRANSFORMATIVE

WALTON FAMILY  
FOUNDATION

### VISIONARY

BULLITT  
FOUNDATION

Chick-fil-A  
Foundation

### COMMUNITY

UNIVERSITY OF  
NOTRE DAME  
School of Architecture

GreenTools  
Powered by the Solid Waste Division

THADANI ARCHITECTS + URBANISTS

DANIELS  
REAL ESTATE

FARR  
ASSOCIATES

DPZ  
CODESIGN

SEABROOK  
WASHINGTON COAST

Fund for the  
Environment  
& Urban Life  
THE DRAM FOUNDATION, INC.

MOULE & POLYZOIDES  
ARCHITECTS AND URBANISTS

Century  
group

ZA

### NEIGHBORHOOD

cmn  
associates

MITHŪN

Stantec

CRABTREE  
GROUP INC.  
ENGINEERING SMART GROWTH™

LeylandAlliance  
COMMUNITY. TRADITION. INNOVATION.

DAVID M. SCHWARZ ARCHITECTS THE LIVE/WORK/WALK FOUNDATION

King County  
Protecting Our Waters  
Doing our part on rainy days

Michael Baker  
INTERNATIONAL

NATIONAL  
ASSOCIATION of  
REALTORS®

NTBA NATIONAL  
TOWN BUILDERS  
ASSOCIATION

B+H  
Advance Strategy™

GP

SOUTHERN VILLAGE

TORTI  
GALLAS +  
PARTNERS

UNION STUDIO  
ARCHITECTURE & COMMUNITY DESIGN

OPTICOS

### CONGRESS

Seattle Department  
of Transportation

Seattle Office of Planning  
& Community Development,  
Seattle Design Commission, &  
Seattle Planning Commission

Seattle Department of  
Construction and Inspection

### IN-KIND

ACTIVE  
TOWNS

ei enviroissues

### A LA CARTE

Qamar Architecture +  
Town Planning

Stephen Poulakos

Treasure Coast Regional  
Planning Council (TCRPC)

MTRWestern

Chuck Wolfe, Attorney and  
Seeing Better Cities Group

Bill Lennertz

National Charrette  
Institute

Gibbs Planning Group

Structura Naturalis Inc.

## CNU 26. Savannah

# In Savannah, human-scaled design is second nature.

From its historic squares and narrow streets to the vibrant culture of its coastal Georgia surroundings, the city of Savannah exemplifies great urbanism and design. Almost three hundred years of civic and architectural excellence have built a city where human-scaled neighborhoods and attention to detail are second nature. Yet Savannah and its region face their own challenges—protecting its character, addressing inequality, adapting to a changing climate.

For our 26th annual Congress, CNU invites you to explore all of Savannah, Georgia—a fascinating American place, from its world-famous historic core to its fast-changing outer reaches, that demonstrates the value of excellence in urbanism.

