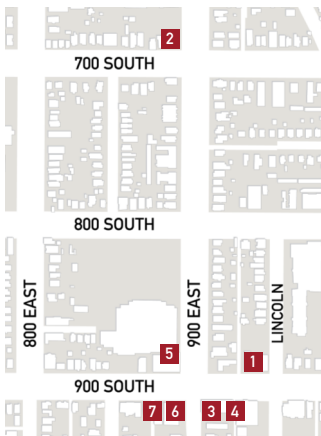
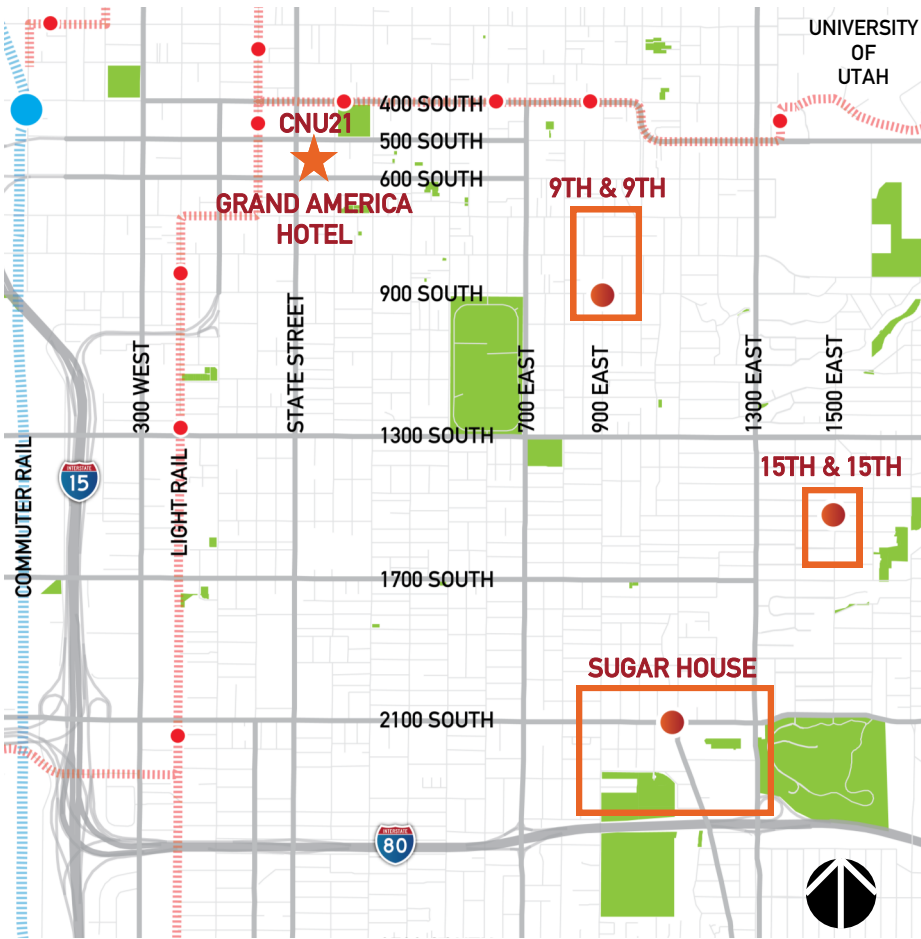


WALKABLE NEIGHBORHOODS NEAR DOWNTOWN



Restaurants

- 9th South Delicatessen**
931 E 900 South St
801-517-3663
www.9thsouthdeli.com
Sandwiches, soups & salads
- Café Trio**
680 S 900 East St
801-533-8746
www.triodining.com
Italian
- Dolcetti Gelato**
902 E 900 South St
801-485-3254
www.dolcettigelato.com
Gelato, pastries & espresso
- Mazza**
912 E 900 South St
801-521-4572
www.mazacafe.com
Middle Eastern cuisine
- Pago**
878 S 900 East St
801-532-0777
www.pagoslc.com
Artisan, local & farm fresh

Coffee

- Coffee Garden**
878 E 900 South St
801-355-3425
Coffee, sandwiches & pastries

Point of Interest

- Tower Theater**
876 E 900 South St
801-746-0288
www.towertheatre.com
Independent film

SUGAR HOUSE



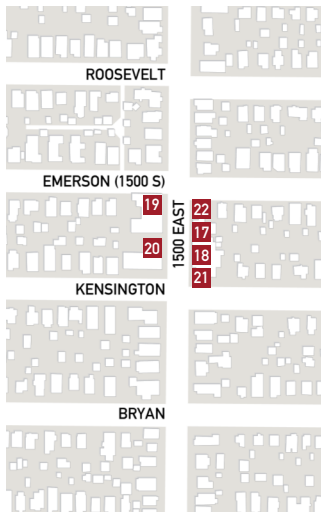
Tavia McGrath



15TH & 15TH



Tavia McGrath



Restaurants

- Caterina**
2155 S Highland Dr (1100 E)
801-819-7555
www.caterinaslc.com
French
- The Dodo**
1355 E 2100 South St
801-486-2473
American
- Fiddler's Elbow**
1061 E 2100 South St
801-463-9393
www.fidlerselbowslc.com
Casual food & drink
- Omar's Rawtopia**
2148 S Highland Dr (1100 E)
801-486-0332
www.omarsrawtopia.com
Vegetarian
- Salt Lake Pizza & Pasta**
1063 E 2100 South St
801-484-1804
www.saltlakepizzaandpasta.com
Italian pizza & pasta
- The Soup Kitchen**
2012 S Highland Dr (1100 E)
801-467-0908
www.slcsoup.com
Soups & sandwiches

Pubs

- Sugar House Pub**
1992 S 1100 East St
801-413-2857
Beer, bratwurst & pretzels
- The Tap Room**
2275 S Highland Dr (1100 E)
801-466-0974
Neighborhood bar

Coffee

- Sugar House Coffee**
2011 S 1100 East St
801-883-8867
www.sugarhousecoffee.com
Coffee, sandwiches & soups

Restaurants

- Fresco Italian Café**
1513 S 1500 East St
801-486-1300
www.frescoitaliancafe.com
Regional Italian & European
- Mazza**
1515 S 1500 East St
801-484-9259
www.mazacafe.com
Middle Eastern cuisine
- The Paris**
1500 S 1500 East St
801-486-5585
www.theparis.net
Bistro & wine bar

Coffee

- Starbucks**
1521 S 1500 East St
801-485-7267
www.starbucks.com/store/15895
Coffee, pastries & sandwiches

Point of Interest

- King's English Bookshop**
1511 S 1500 East St
801-484-9100
www.kingsenglish.com
Independent bookshop



CITY GUIDE

21st Annual Congress for the New Urbanism

- Restaurants
- Events and Chapter Meet-ups
- Points of Interest
- Transportation



Lance Tyrrell



Tavia McGrath



Tavia McGrath



Tavia McGrath

LIVING COMMUNITY
21st Annual Congress for the New Urbanism
MAY 29 - JUNE 1, 2013
SALT LAKE CITY, UTAH

CNU 21

DOWNTOWN SALT LAKE CITY



Tavia McGrath

Tavia McGrath

Restaurants

American

- 1 The Copper Onion**
111 E Broadway (300 S) Ste 170
801-355-3282
www.thecopperonion.com
- 2 Judge Café and Grill**
8 E Broadway (300 S)
801-531-0917
www.judgecafe.com
- 3 Lamb's Grill**
169 S Main St
801-364-7166
www.lambsg Grill.com

Asian/Thai

- 4 Plum Alley**
111 E Broadway (300 S) Ste 190
801-355-0543
www.plumalley.com
- 5 Thai Lotus**
212 E 500 South St
801-328-4401
www.thailotuscafe.com

Bakery

- 6 Carlucci's Bakery**
314 W Broadway (300 S)
801-366-4484
www.carluccisbakery.com
- 7 Gourmandise Bakery**
250 S 300 East St
801-328-3330
www.gourmandisethebakery.com
- 8 Les Madeleines**
216 E 500 South St
801-355-2294
www.les-madeleines.com

Cajun

- 9 The Bayou**
645 S State St (100 E)
801-961-8400
www.utahbayou.com

Casual

- 10 Faustina**
454 E 300 South St
801-746-4441
www.faustinaslc.com
- 11 Washington Square Café**
451 S 200 East St
801-535-6102
www.clocktowercatering.com

Coffee/Tea

- 12 Beehive Tea Room**
12 W Broadway (300 S)
801-328-4700
www.beehivetearoom.com

Nostalgia

- 13 Nostalgia**
246 E 100 South St
801-532-5638
www.nostalgiacoffee.com

The Rose Establishment

- 14 The Rose Establishment**
235 S 400 West St
801-990-6270
www.theroseestb.com

Continental/European

- 15 Bruges Waffles & Frites**
336 W Broadway (300 S)
801-363-4444
www.brugeswaffles.com

Deli

- 16 Siegfried's Delicatessen (German)**
20 W 200 South St
801-355-3891
www.siefriedsdelicatessen.com
- 17 Tony Caputo's (Italian)**
314 W Broadway (300 S)
801-531-8669
www.caputosdeli.com

Italian

- 18 Caffé Molise**
55 W 100 South St
801-364-8833
www.caffemolise.com
- 19 Cannella's**
204 E 500 South St
801-355-8518
www.cannellas.com

Mexican

- 20 Frida Bistro**
545 W 700 South St
801-983-6692
www.fridabistro.com
- 21 Red Iguana**
736 W North Temple St (100 N)
801-322-1489
www.rediguana.com

Rio Grande Cafe

- 22 Rio Grande Cafe**
270 S Rio Grande St (450 W)
801-364-3302
www.riograndecafeut.com

Microbreweries/Pubs

- 23 Beerhive Pub**
128 S Main Street
801-364-4268

The Green Pig Pub & Grill

- 24 The Green Pig Pub & Grill**
31 E 400 South St
801-532-7441
www.thegreenpigpub.com

Red Rock Brewing Co

- 25 Red Rock Brewing Co**
254 S 200 West St
801-521-7446
www.redrockbrewing.com

Squatters Pub Brewery

- 26 Squatters Pub Brewery**
147 W Broadway (300 S)
801-363-2739
www.squatters.com

Pizza

- 27 Este Pizzeria**
156 E 200 South St
801-363-2366
www.esteppizzeria.com

Maxwell's East Coast Eatery

- 28 Maxwell's East Coast Eatery**
9 Exchange Place (350 S)
801-328-0304
www.maxwellsece.com

Settebello

- 29 Settebello**
260 S 200 West St
801-322-3556
www.settebello.net

Sandwiches

- 30 Crown Burger**
118 N 300 West St
801-532-5300
www.crown-burgers.com

DP Cheesesteaks

- 31 DP Cheesesteaks**
83 E Broadway (300 S)
801-883-8966
www.thedowntownphilly.com

Moochie's

- 32 Moochie's**
232 E 800 South St
801-596-1350
www.moochiesmeatballs.com

Seafood/Steak

- 33 Market Street Grill Downtown**
48 W Market St (340 S)
801-322-4668
www.ginc.com/grill/downtown

Vegetarian

- 34 Oasis Café**
151 S 500 East St
801-322-0404
www.oasiscafeslc.com

Sages

- 35 Sages**
473 E Broadway (300 S)
801-322-3790
www.sagescafe.com

Food Court

- 36 City Creek Center**
28 S State St (100 E)
801-521-2012
www.citycreekcenter.com

CNU 21 Events & Chapter Meet-up Locations

CNU 21 Events

- 37 Opening Plenary**
Grand America Hotel
Wednesday, May 29, 2013
5:30 PM-6:30 PM
- 37 Opening Reception**
Grand America Hotel
Wednesday, May 29, 2013
6:30 PM-8:00 PM
- 37 2013 Charter Awards**
Grand America Hotel
Thursday, May 30, 2013
5:30 PM-6:45 PM
- 38 Mormon Tabernacle Choir**
Salt Lake Tabernacle
50 N West Temple St (100 W)
Thursday, May 30, 2013
8:45 PM-9:30 PM

Closing Plenary

- 37 Closing Plenary**
Grand America Hotel
Saturday, June 1, 2013
5:30 PM-6:30 PM

Closing Night Event

- 39 Closing Night Event**
Granary Row
300-400 W 700 South St
Saturday, June 1, 2013
7:30 PM-12:00 AM

CNU Chapter Meet-ups

- CNU Chapter Meet-ups**
Friday, May 31, 2013
7:30 PM-10:00 PM
- 40 CNU Atlanta Meet-up**
Gracie's
326 S West Temple St (100 W)
801-819-7565
www.graciesslc.com

CNU California Meet-up

- 26 CNU California Meet-up**
Squatters Pub Brewery
147 W Broadway (300 S)
801-363-2739
www.squatters.com

CNU Cascadia Meet-up

- 33 CNU Cascadia Meet-up**
Market Street Grill Downtown
48 W Market St (340 S)
801-322-4668
www.marketstreetgrill.com

CNU Florida Meet-up

- 41 CNU Florida Meet-up**
Peery Hotel
110 W Broadway (300 S)
801-521-4300
www.peeryhotel.com

CNU Great Lakes Meet-up

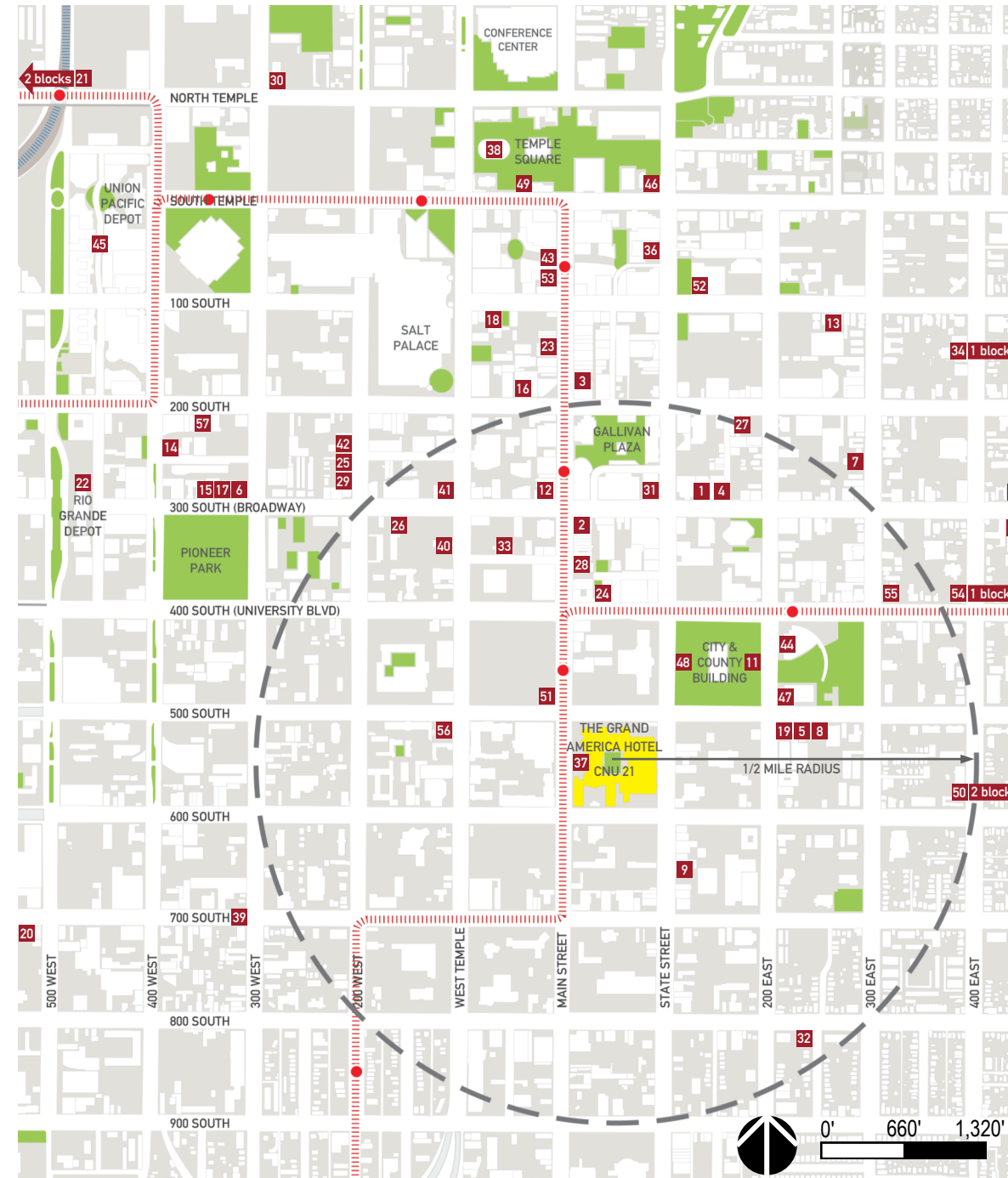
- 23 CNU Great Lakes Meet-up**
Beehive Pub
128 S Main St
801-364-4268

CNU New York, New England & Washington DC Meet-up

- 26 CNU New York, New England & Washington DC Meet-up**
Squatters Pub Brewery
147 W Broadway (300 S)
801-363-2739
www.squatters.com

CNU Texas Meet-up

- 42 CNU Texas Meet-up**
Poplar Street Pub
242 S 200 West St
801-532-2715
www.poplarstreetpub.com



Tavia McGrath



Tavia McGrath

Points of Interest

- 43 City Creek Center**
50 S Main St
801-521-2012
www.citycreekcenter.com
10:00 AM-9:00 PM M-SAT
Closed Sunday
- 44 The City Library**
210 E 400 South St
801-524-8200
www.sclpl.org
9:00 AM-9:00 PM M-TH
9:00 AM-6:00 PM F-SAT
1:00 PM-5:00 PM SUN
- 45 Gateway**
18 N Rio Grande St (450 W)
801-456-0000
www.shopthegateway.com
10:00 AM-9:00 PM M-SAT
12:00 PM-6:00 PM SUN
- 46 Historic Beehive House**
67 E South Temple St
801-240-2681
www.visittemplesquare.com
9:30 AM-8:30 PM

- 47 The Leonardo Science Museum**
209 E 500 South St
801-531-9800
www.theleonardo.org
10:00 AM-5:00 PM M-W
10:00 AM-10:00 PM TH-SAT
Closed Sunday
- 48 Salt Lake City & County Building**
451 S State St (100 E)
801-556-1140
www.slcgov.com
Self guided tours available
- 49 Temple Square**
50 E North Temple St (100 N)
801-240-1706
www.visittemplesquare.com
9:00 AM-9:00 PM
- 50 Trolley Square**
600 S 700 East St
801-521-9877
www.trolleysquare.com
10:00 AM-9:00 PM M-SAT
12:00 PM-5:00 PM SUN

Self Guided Walking Tours
CNU 21 has partnered with Utah Heritage Foundation, a statewide preservation foundation, to produce a series of self-guided walking tours that feature the architectural heritage of historic Salt Lake City. Tour information is available at the Grand America Hotel, or on the Internet by scanning the following Quick Response (QR) code:



http://vqr.mx/Ec4p

Food Truck Plaza

In the spirit of "pop up" urbanism, Salt Lake City's finest sidewalk cuisine will be served in a nearby parking lot located northwest from CNU 21. Open 10:30 AM-4:00 PM.

- 51 Bento Truck**
801-403-5609
www.bentotruck.com
Japanese cuisine
- 51 Chow Truck**
801-916-6605
www.chowtruck.com
Haute Asian cuisine

- 51 Lewis Bros**
801-835-3828
www.lewisbrosfoodtruck.com
Fine fast food
- 51 Off the Grid**
801-251-6863
www.offthegriddslc.com
Waffles & beverages
- 51 Rubadue's Saucy Skillet**
801-230-9180
www.sauceyskilletacademy.com
Featuring fresh local ingredients

- 51 So Cupcake**
801-274-8300
www.socupcake.com
Cupcakes, cakes & cake drops
- 51 Sure Fire Pizza**
801-938-3473
www.surefirepizza.com
Wood fired oven pizza
- 51 Waki Paki**
801-556-9480
www.wakipakifoodtruck.com
Pakistan street food

CNU 21 Hotel & Local Services

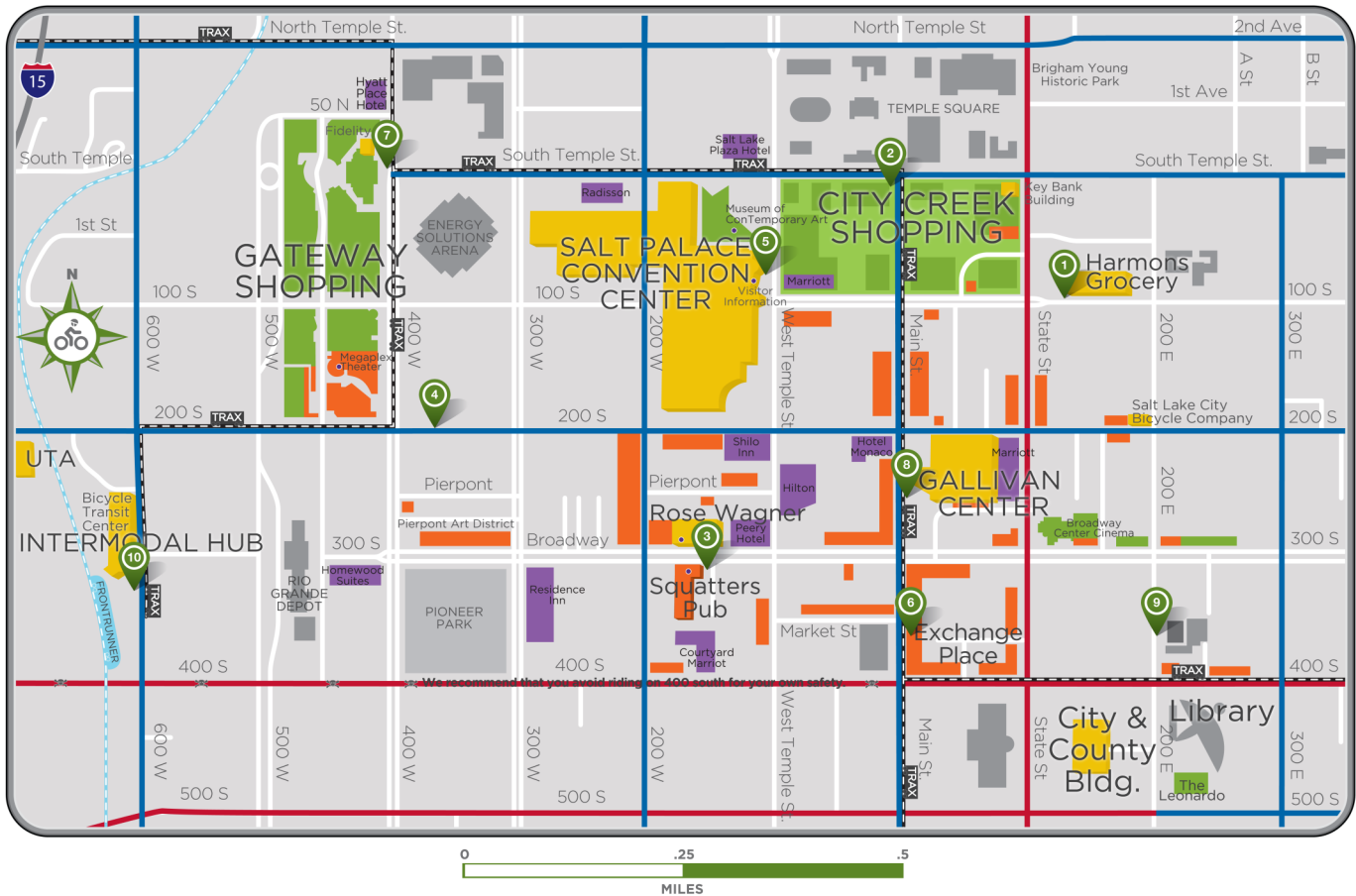
- 37 The Grand America Hotel**
555 S Main St
800-304-8696 Reservations
801-258-6000 Local
801-258-6703 Concierge
www.thegrandamerica.com
CNU21 Congress Hotel
- 52 Harmon's City Creek**
135 E 100 South St
801-428-0366 Store
801-428-0399 Pharmacy
www.harmonsgrocery.com
6:00 AM-11:00 PM Store
9:00 AM-9:00 PM Pharmacy
Urban grocer

- 53 Rite Aid Pharmacy**
72 S Main St
801-531-0583 Pharmacy
www.riteaid.com
6:30 AM-7:00 PM Store
10:00 AM-6:00 PM Pharmacy
- 54 Walgreens Pharmacy**
531 E 400 South St
801-478-0703
www.walgreens.com
8:00 AM-10:00 PM M-F
9:00 AM-6:00 PM SAT
9:00 AM-5:00 PM SUN

- 55 7-Eleven**
309 E 400 South St
801-521-2853
www.7-eleven.com
Open 24 hours
Gas & convenience store
- 56 Chevron Station**
504 S West Temple St (100 W)
801-328-1432
6:00 AM-11:00 PM
www.chevronwithtechtron.com
Gas & convenience store
- 57 Jade Market**
353 W 200 South St
801-521-2106
7:00 AM-12:00 AM
Convenience store

BICYCLE TRANSIT

GREENbike SLC BIKE SHARE



LEGEND

- FOOD/DRINK
- SHOPPING & ENTERTAINMENT
- HOTEL
- BIKE LANE
- DANGER
- TRAX
- TRAX STATION

BIKE SHARE STATIONS

① Harmons' Station 135 East 100 South	⑥ Exchange Place 357 South Main Street
② Key Bank Station @ Temple Square	⑦ Fidelity Station @ The Gateway 400 West North Temple
③ Squatters' Station @ The Rose 157 West 300 South	⑧ Rocky Mtn. Power Station @ Gallivan Center 225 South Main Street
④ 348 West 200 South	⑨ Tour of Utah Station 349 South 200 East
⑤ Backcountry.com Station @ Visit Salt Lake 66 West Temple	⑩ Intermodal Hub 290 South 600 West

The **free Spotcycle app** shows bike availability and station locations. Search **Spotcycle** on your smart phone or visit greenbikeslc.org

BROUGHT TO YOU BY



Problem? Question? 801-333-1110

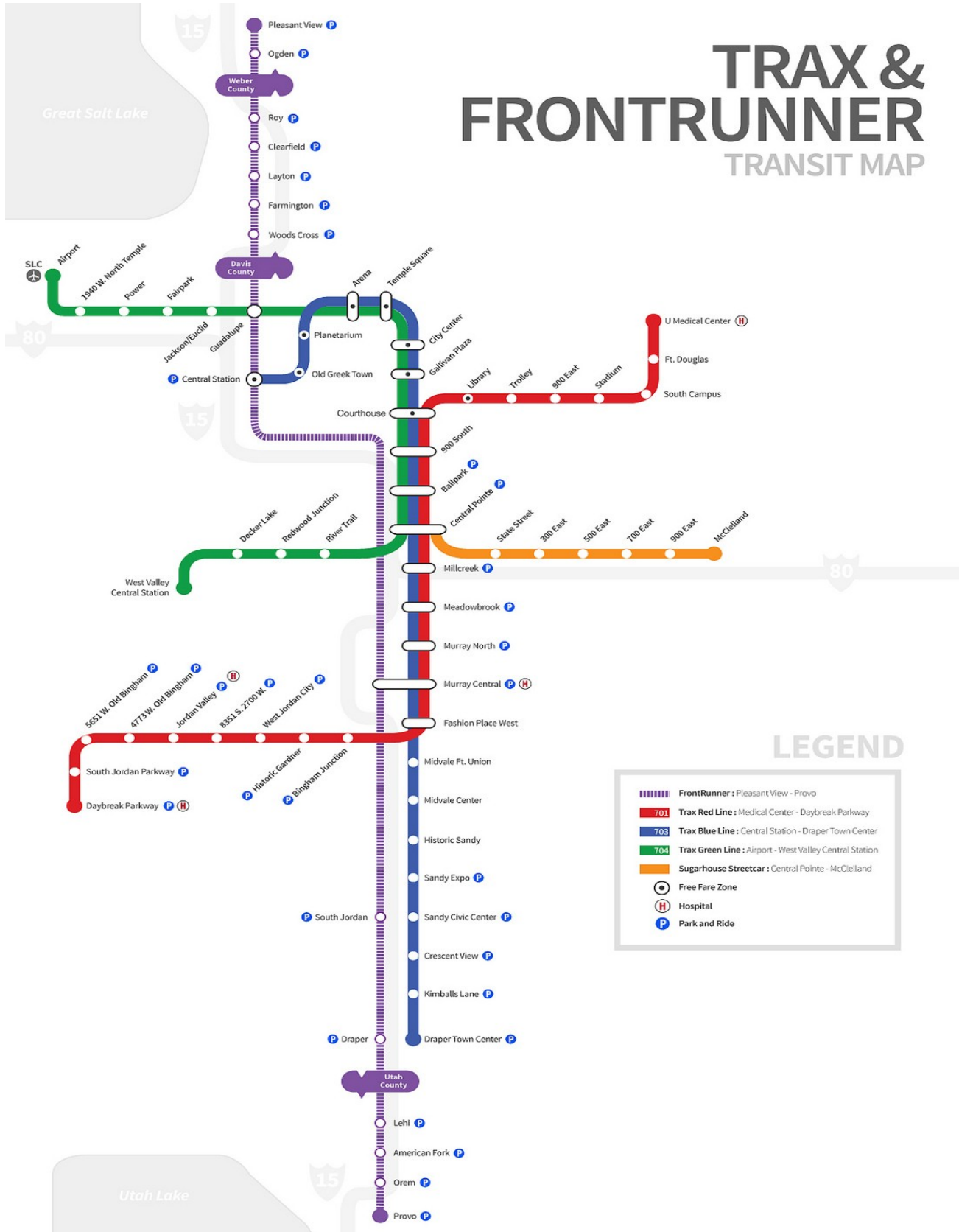
Free GREENbike Pass Code 060113

You "got a ticket to ride" GREENbike, the new Salt Lake City bike share system! The nearest bike share station to the Grand America Hotel is Exchange Place, which is number 6 on the above map. Although the bike share system pricing is designed for downtown trips between bike share stations, **CNU 21 attendees may enjoy free GREENbike rentals throughout the Congress by using "pass code" 060113.**

GREENbike provides a suitable bike for most downtown routes, however for a pedal up beautiful Memory Grove or to neighborhoods east of downtown, you may want a lighter bike. Additional bicycle rentals are available at several bike shops in the downtown area, or the Bicycle Transit Center located at the Salt Lake City Central Station, 250 S 600 West Street. Hours of operation are Monday through Friday, from 7:00 AM to 6:00 PM, Saturday from 10:00 AM to 5:00 PM, and closed Sunday. For more information call 801-359-0814 or online at www.bicyclertransitcenter.com.

MASS TRANSIT

TRAX & FRONTRUNNER TRANSIT MAP



For More Information

Utah Transit Authority (UTA) provides bus, light rail (TRAX), and commuter rail (Front Runner) services throughout Salt Lake and the Wasatch Front. Services are generally available from 6:00 AM to midnight, excluding holidays. For more information, UTA customer service is available Monday through Friday, from 6:00 AM to 7:00 PM, and Saturday from 8:30 AM to 5:00 PM at 801-287-2667 or online at www.rideutah.com.